

# KARFE - opt

universal tear-proof kit plus finishing surround

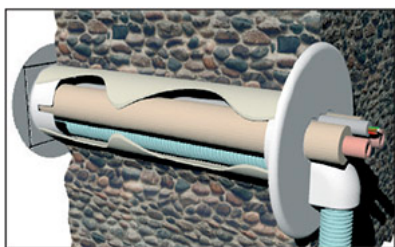
- cod. N11122003 - cod. SCD100126

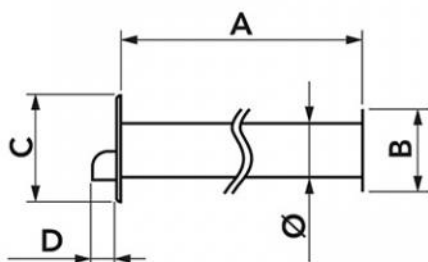


## TECHNICAL SPECIFICATIONS:

- Stiff, shockproof, anti-UVA and recyclable PVC
- Kit consisting of: 1 wall sleeve kit and 1 RFE exterior finish rosette
- Heat shrink barcode packaging

## EXAMPLE OF INSTALLATION:





## DIMENSIONS

CODE	A [mm]	B [mm]	C [mm]	D [mm]	Ø [mm]
N11122003	350	100	130	27,5	62
SCD100126	500	100	130	27,5	62

## ITEMS

CODE	DESCRIPTION
N11122003	KARFE - "KARFE" UNIVERSAL WALL SLEEVE KIT
SCD100126	

All rights relating to this publication are the exclusive property of Tecnosystemi SpA.

Tecnosystemi SpA reserves the right to make changes at any time and without notice, for technical or commercial needs.