

# Adjustable long-range diffuser in anodised aluminium

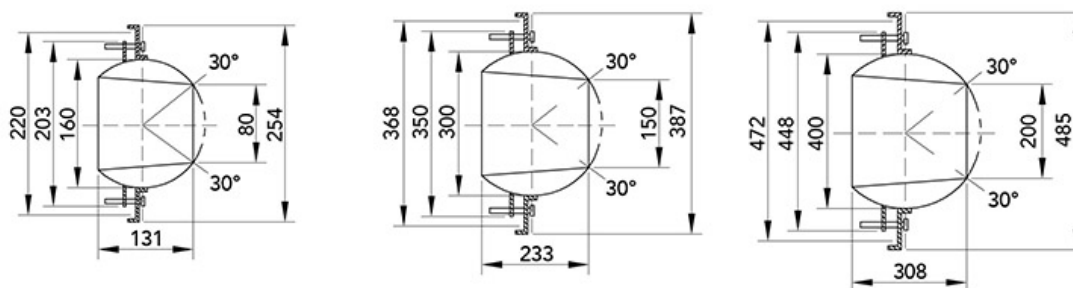
- cod. 11175020 - cod. 11175025 - cod. 11175030



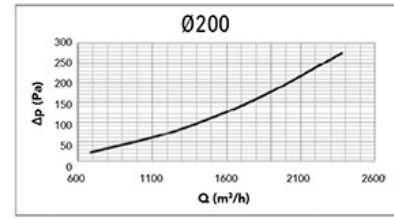
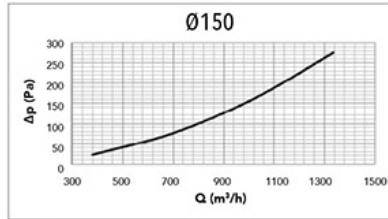
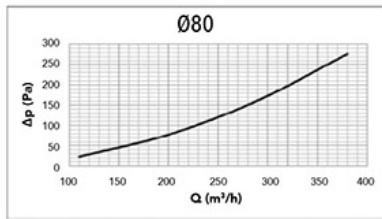
## TECHNICAL SPECIFICATIONS:

- Made of aluminium
- Fastening by means of screws directly on channel
- Anodised aluminium finish
- Installation height 2.4 - 11.5 m

## TECHNICAL DRAWINGS



## FLOW RATE DIAGRAMS



## TECHNICAL DATA

Ak [m²]	Q [m³/h] MIN	Q [m³/h] MAX	LwA [dB(A)] MIN	LwA [dB(A)] MAX	X(0.25) - Y(0.25) MIN [m]	X(0.25) - Y(0.25) MAX [m]	Dpt [Pa] MIN	Dpt [Pa] MAX
0,0050	60	140	20	40	20	40	10	50
0,0176	250	550	31	58	11,9	26,2	10	50
0,014	480	1030	38	69	14,0	30,1	10	50

## ITEMS

CODE	DESCRIPTION
11175020	ADJUSTABLE, LONG THROW DIFFUSER IN ANODISED ALUMINIUM Ø 80mm
11175025	ADJUSTABLE, LONG THROW DIFFUSER IN ANODISED ALUMINIUM Ø 150mm
11175030	ADJUSTABLE, LONG THROW DIFFUSER IN ANODISED ALUMINIUM Ø 200mm

All rights relating to this publication are the exclusive property of Tecnosystemi SpA.

Tecnosystemi SpA reserves the right to make changes at any time and without notice, for technical or commercial needs.