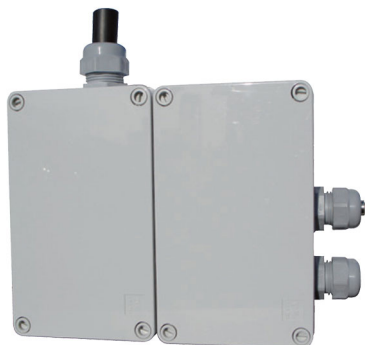


# Nebuliser pump for energy saving



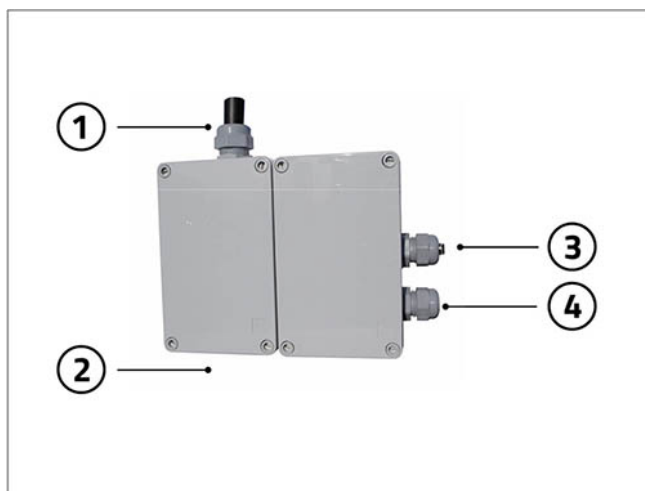
- cod. 12170070



## TECHNICAL SPECIFICATIONS:

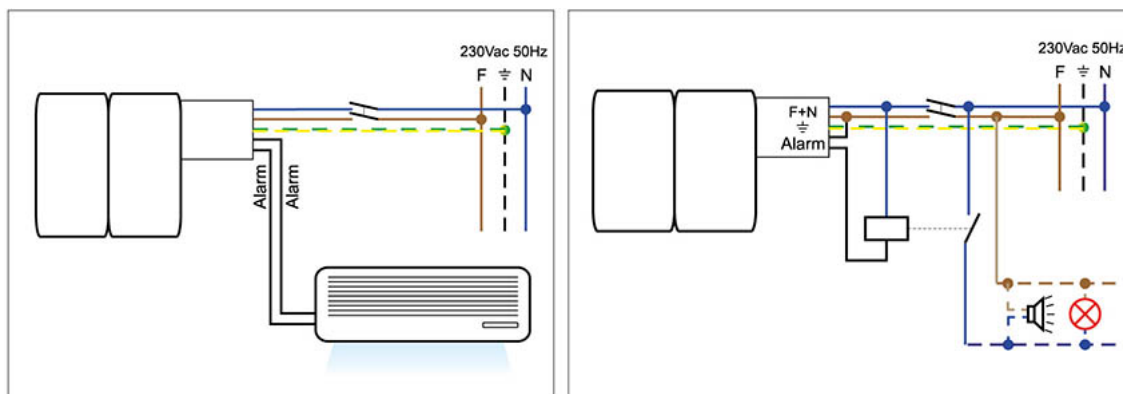
- Power supply 230V - 50Hz
- Power consumption 47 W
- Protection rating IP20
- Max noise level 59 [dB(A)]
- Max flow rate 7 l/h
- Max pressure 15 bar
- Dimensions W 250 x H 250 x D 90 mm

## OPERATION



- [1] Condensation inlet
- [2] Vent outlet
- [3] Condensation output
- [4] Power cables

## ELECTRICAL CONNECTION OF THE ALARM



The RW-MINI spray pump has a 16A C-NO-NA dual contact alarm. Refer to the wiring diagrams in this instruction sheet for the electrical connection. It is recommended to use the alarm contact to stop the indoor unit. Important: never interrupt the power supply of the spray pump.

## ITEMS

CODE	DESCRIPTION
12170070	"RW MINI" ENERGY-SAVING ATOMISING PUMP

All rights relating to this publication are the exclusive property of Tecnosystemi SpA.

Tecnosystemi SpA reserves the right to make changes at any time and without notice, for technical or commercial needs.