

DATASHEET

rev. 00 - 16/09/2022

KARFE

universal tear-proof kit plus finishing surround

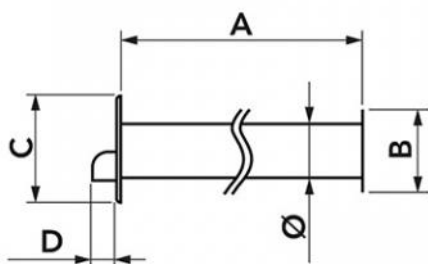
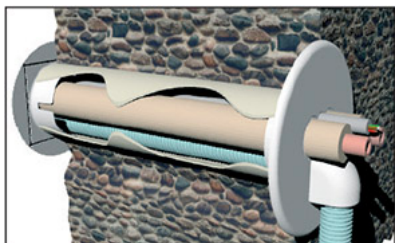
N11122003 - SCD100126



TECHNICAL SPECIFICATIONS:

- Stiff, shockproof, anti-UVA and recyclable PVC
- Kit consisting of: 1 wall sleeve kit and 1 RFE exterior finish rosette
- Heat shrink barcode packaging

EXAMPLE OF INSTALLATION:



DIMENSIONS

CODE	A [mm]	B [mm]	C [mm]	D [mm]	Ø [mm]
N11122003	350	100	130	27,5	62
SCD100126	500	100	130	27,5	62

ITEMS

CODE	DESCRIPTION
N11122003	KARFE - "KARFE" UNIVERSAL WALL SLEEVE KIT
SCD100126	