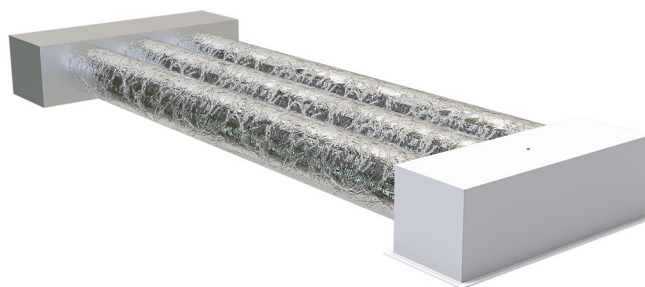


KIT RIPRESA

Recovery KIT for ducted units MOD.1-2-3

- cod. PWD301301 - cod. PWD301302 - cod. PWD301303



THE KIT CONTAINS:

- no.1 800x300 intake grille with fixed flaps tilted at 45° with removable filter in white painted aluminium
- no.3 collars for plenum mod. B2 Ø150/200 mm
- no.1 plenum 800x300x250 for intake grille with fixed flaps tilted at 45° and removable filter
- no.3 electro-galvanised sheet metal collars for plenums from Ø151 mm to Ø200 mm
- n has 1 thermal-acoustic flexible ducted pipe in aluminium double armoured wall ζ 203 mm L.10 m
- 6 Hose clamp 200x220 mm
- no.1 tailor-made delivery / return plenum in aluminised PAL for ducted model 1, model 2 and model 3

DIMENSIONS

| CODE | PLENUM MODEL | INTERNAL HEIGHT a [mm] | INTERNAL WIDTH b [mm] | INTERNAL DEPTH c [mm] |
|-----------|-----------------|------------------------|-----------------------|-----------------------|
| PWD301301 | 11161605 MOD. 1 | on request up to 300 | on request up to 1000 | 280 mm fixed |
| PWD301302 | 11161606 MOD. 2 | on request up to 400 | on request up to 1200 | 280 mm fixed |
| PWD301303 | 11161607 MOD. 3 | on request up to 400 | on request up to 1500 | 280 mm fixed |

ITEMS

| CODE | DESCRIPTION |
|-----------|-------------|
| PWD301301 | |
| PWD301302 | |
| PWD301303 | |

All rights relating to this publication are the exclusive property of Tecnosystemi SpA.

Tecnosystemi SpA reserves the right to make changes at any time and without notice, for technical or commercial needs.