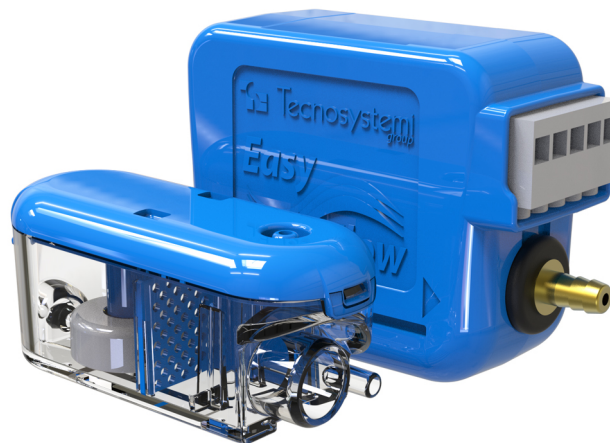


EF15-A - EF15-AV

mini acid condensate water pump

- cod. 12170050 - cod. 12170049H - cod. 12170045
- cod. 12170051



DESCRIPTION

Ideal for collecting acidic water from boilers, the "EF-A" easy flow mini pump solves the problems that arise whenever it is necessary to replace the old boiler with a new generation condensation boiler.

Very compact and quiet, it connects directly to the boiler siphon*.

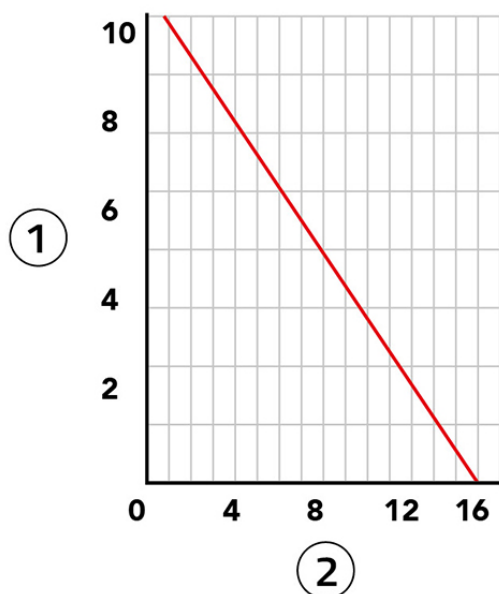
The construction characteristics adopted make the "EF15-A" - "EF15-AV" resistant to water acidity over time.

Thanks to the double 8a alarm contact on board the electronics, it is possible to interrupt the operation of the boiler.

TECHNICAL SPECIFICATIONS:

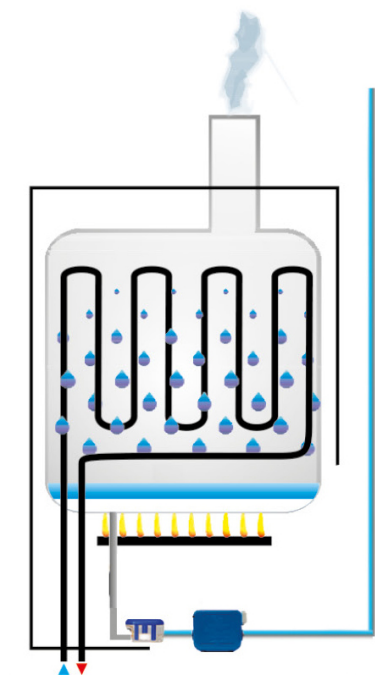
- Flow rate 15 l/h
- Intake max 2 m vertical between floating body and pump
- Float body dimensions L 87 - H 38 - D 34 mm
- Max. 10 m vertical delivery between pump and water outlet
- Power supply 230 V - 50 Hz
- Alarm contact C-NO/NC 8A
- Max noise level 29 [dB(A)]
- Tube size \varnothing 4 x 6 mm
- pH minimum 2.5
- Max operating temperature +55°C
- Power consumption 19 W
- Protection rating IP20

EF 15 LITRES



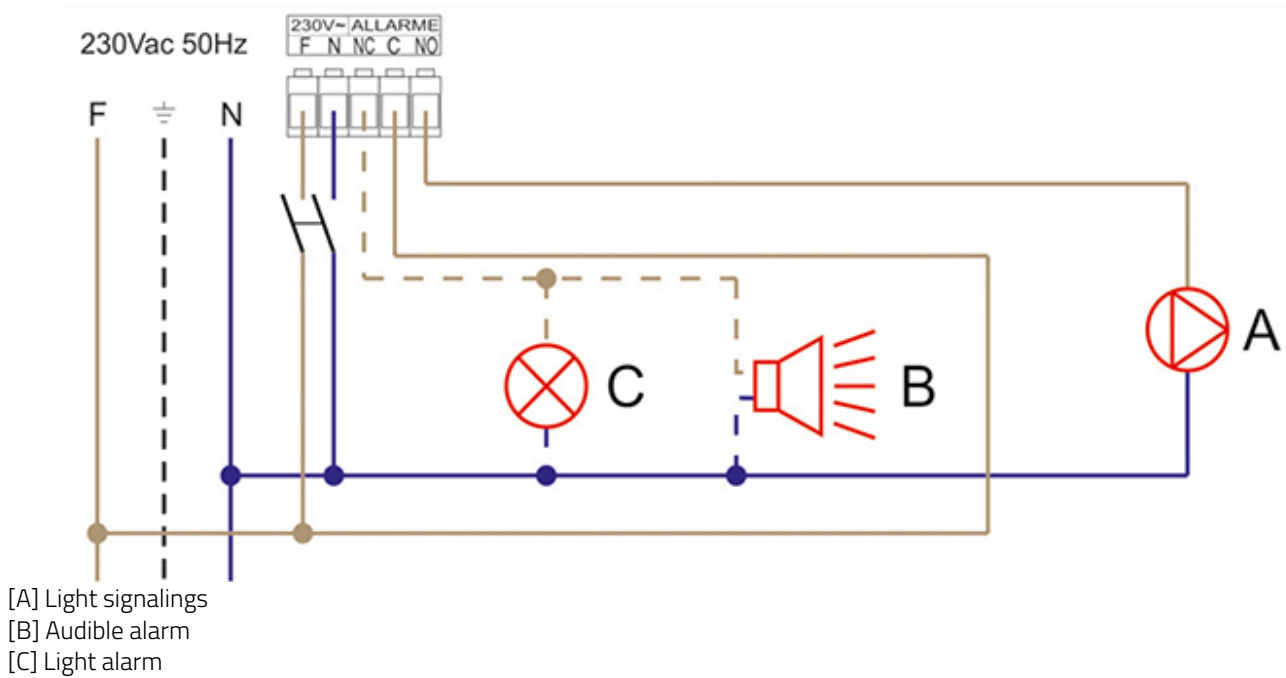
- [1] Air delivery (vertical m)
- [2] Flow rate (litres/hour)
 - Flow rate 15 l/h
 - Max. 10 m vertical delivery
 - Power consumption 19 W
 - Alarm contact NO/NC 8A
 - Protection rating IP20

EXAMPLE OF BOILER FAN COIL INSTALLATION



- [1] EF-A
 - [2] EF- AV
 - [3] Boiler
 - [4] Acid condensation
 - [5] Siphon
- *ATTENTION: Do not connect the mini pump to the boiler flue

WIRING ASSEMBLY DIAGRAM



ITEMS

CODE	DESCRIPTION
12170050	MINI PUMP FOR ACIDIC CONDENSATE EF15-AV (W/VERTICAL CONNECTION) WITH FLOAT HOUSING
12170049H	
12170045	MINI PUMP FOR ACIDIC CONDENSATE EF15-A (W/HORIZONTAL CONNECTION) WITH FLOAT HOUSING
12170051	SPARE FLOAT HOUSING FOR MINI PUMP MODEL EF15-AV (W/VERTICAL CONNECTIONS)

All rights relating to this publication are the exclusive property of Tecnosystemi SpA.

Tecnosystemi SpA reserves the right to make changes at any time and without notice, for technical or commercial needs.