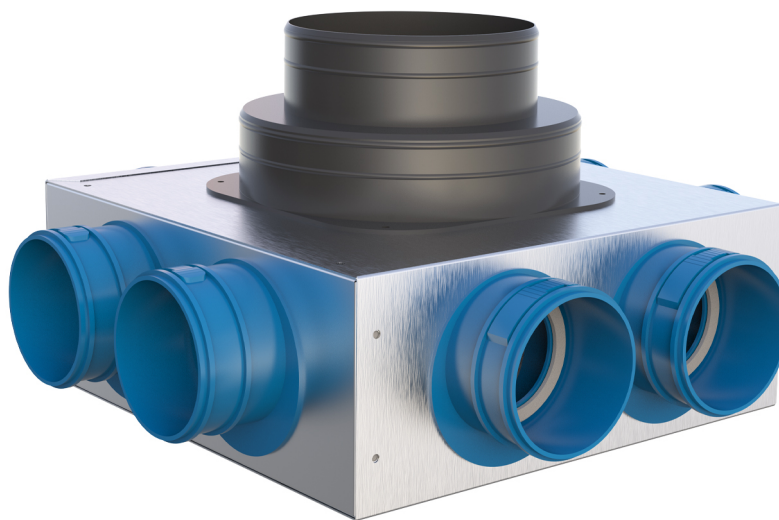


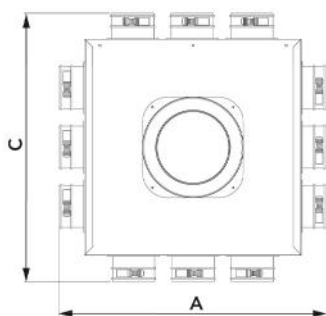
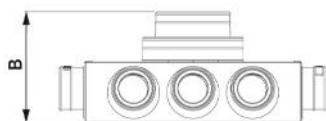
Distribution box for VMC for flexible pipe 4 - 6 - 8 - 10 - 12 outputs 75 and 90

- cod. ACD600147 - cod. ACD600148 - cod. ACD600149
- cod. ACD600150 - cod. ACD600151 - cod. ACD600152
- cod. ACD600153 - cod. ACD600154 - cod. ACD600155
- cod. ACD600156



TECHNICAL SPECIFICATIONS:

- Made of galvanized sheet metal
- Internal insulation in 3 mm thick polyethylene
- With inlet collar with double diameter $\varnothing 150 - \varnothing 200$
- Outgoing collars as shown in the table
- Complete with brackets for ceiling mounting
- Box supplied pre-assembled
- Available with collar $\varnothing 100 / \varnothing 125 / \varnothing 150$



DIMENSIONS

CODE	A [mm]	B [mm]	C [mm]	INPUT Ø [mm]	No.of OUTLETS - Ø [mm]
ACD600147	415	222	311	150 / 200	4 - 75
ACD600148	415	222	363	150 / 200	6 - 75
ACD600149	415	222	415	150 / 200	8 - 75
ACD600150	533	222	533	150 / 200	10 - 75
ACD600151	533	222	533	150 / 200	12 - 75
ACD600152	419	222	311	150 / 200	4 - 90
ACD600153	419	222	365	150 / 200	6 - 90
ACD600154	419	222	419	150 / 200	8 - 90
ACD600155	537	222	537	150 / 200	10 - 90
ACD600156	537	222	537	150 / 200	12 - 90

ITEMS

CODE	DESCRIPTION
ACD600147	CMV INSULATED SHEET METAL PLENUM 90° Ø 75 - 4 OUTLETS 150/200
ACD600148	CMV INSULATED SHEET METAL PLENUM 90° Ø 75 - 6 OUTLETS 150/200
ACD600149	CMV INSULATED SHEET METAL PLENUM 90° Ø 75 - 8 OUTLETS 150/200
ACD600150	CMV INSULATED SHEET METAL PLENUM 90° Ø 75 - 10 OUTLETS 150/200
ACD600151	CMV INSULATED SHEET METAL PLENUM 90° Ø 75 - 12 OUTLETS 150/200
ACD600152	CMV INSULATED SHEET METAL PLENUM 90° Ø 90 - 4 OUTLETS 150/200
ACD600153	
ACD600154	
ACD600155	
ACD600156	CMV INSULATED SHEET METAL PLENUM 90° Ø 92 - 12 OUTLETS 150/200

All rights relating to this publication are the exclusive property of Tecnosystemi SpA.

Tecnosystemi SpA reserves the right to make changes at any time and without notice, for technical or commercial needs.