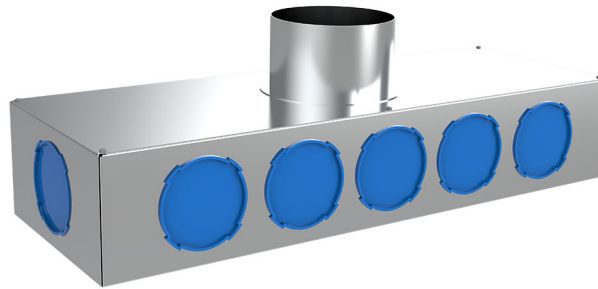


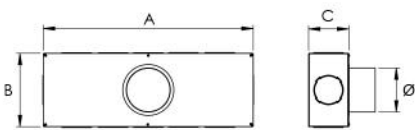
Distribution plenum

- cod. 30100031 - cod. 30100041 - cod. 30100032
- cod. 30100047



TECHNICAL SPECIFICATIONS:

- Made of galvanized sheet metal
- With 12 connector couplers \varnothing 75 and \varnothing 92 mm
- Plenum collars \varnothing 125 and 160



DIMENSIONS

CODE	A [mm]	B [mm]	C [mm]	Ø [mm]
30100031	600	200	110	125
30100041	600	200	180	125
30100032	600	200	110	160
30100047	600	200	180	160

ITEMS

CODE	DESCRIPTION
30100031	DISTRIBUTION PLENUM MOD.1 600X200X110 D125
30100041	DISTRIBUTION PLENUM MOD.2 600X200X180 D125
30100032	DISTRIBUTION PLENUM MOD.1 600X200X110 D160
30100047	DISTRIBUTION PLENUM MOD.2 600X200X180 D160

All rights relating to this publication are the exclusive property of Tecnosystemi SpA.

Tecnosystemi SpA reserves the right to make changes at any time and without notice, for technical or commercial needs.