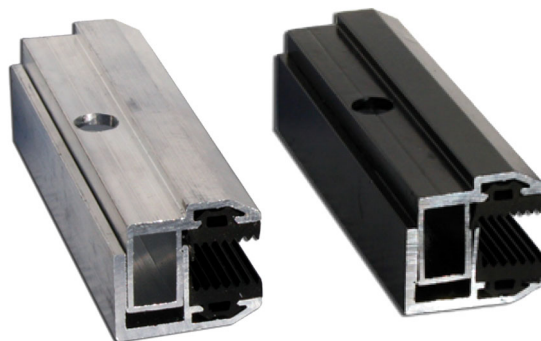


# HMLR

adjustable side clamp for glass panels

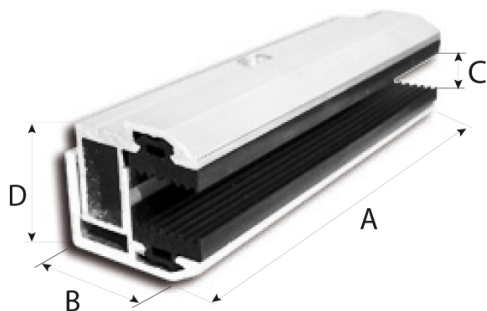
- cod. 11111031 - cod. 11111031BOX - cod. 11111031A
- cod. 11111031ABOX



## TECHNICAL SPECIFICATIONS:

- Material: aluminium alloy 6060
- Complete with EPDM rubber strips
- Ideal for amorphous panels
- Adjustable from 5,8 to 9 mm
- Mod. HMLRA: black anodised version available on request (cod. 11111031A)

## TECHNICAL DRAWING:



## FULL SIZED:

CODE	A [mm]	B [mm]	C [mm]	D [mm]	Ø FORO [mm]
11111031	100	30	5,8+9	24-29	9
11111031BOX	100	30	5,8+9	24-29	9
11111031A	100	30	5,8+9	24-29	9
11111031ABOX	100	30	5,8+9	24-29	9

## ITEMS

CODE	DESCRIPTION
11111031	LATERAL JAW HMLR
11111031BOX	LATERAL JAW HMLR - BOX 20 pcs
11111031A	LATERAL JAW HMLRA
11111031ABOX	LATERAL JAW HMLRA - BOX 20 pcs

All rights relating to this publication are the exclusive property of Tecnosystemi SpA.

Tecnosystemi SpA reserves the right to make changes at any time and without notice, for technical or commercial needs.