

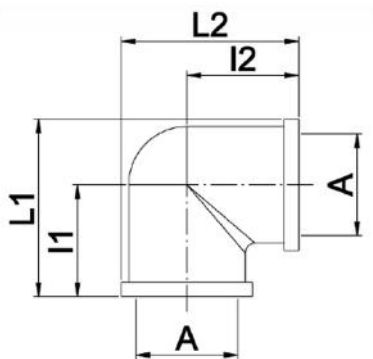
Curve F / F

- cod. 26002910 - cod. 26002920 - cod. 26002930
- cod. 26002940 - cod. 26002950



TECHNICAL SPECIFICATIONS:

- Made of brass
- Application in hydraulics
- Gas thread
- Maximum operating temperature +130°C



DIMENSIONS

CODE	A	l1 [mm]	l2 [mm]	L1 [mm]	L2 [mm]
26002910	1/2"	25		38	
26002920	3/4"	31		46,5	
26002930	1"	36		54	
26002940	1" 1/4	40,5		65,5	
26002950	1" 1/2	46		74	

ITEMS

CODE	DESCRIPTION
26002910	
26002920	
26002930	
26002940	
26002950	

All rights relating to this publication are the exclusive property of Tecnosystemi SpA. Tecnosystemi SpA reserves the right to make changes at any time and without notice, for technical or commercial needs.

All rights relating to this publication are the exclusive property of Tecnosystemi SpA.

Tecnosystemi SpA reserves the right to make changes at any time and without notice, for technical or commercial needs.