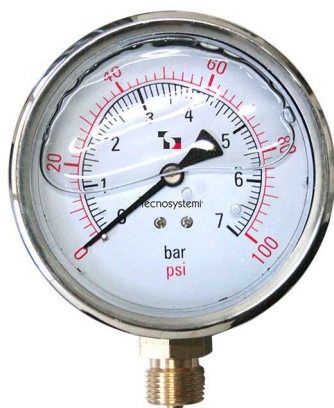


Pressure gauge Ø 100 for gas / water in glycerine bath

- cod. 20000380 - cod. 20000390 - cod. 20000400
- cod. 20000410 - cod. 20000420 - cod. 20000430
- cod. 20000440 - cod. 20000450



TECHNICAL SPECIFICATIONS:

- Stainless steel case
- Plastic glass
- ABS dial
- Operating temperature -20°C to +80°C
- Double reading scale UNI EN 2004/22/EC
- Scale available in 1 - 2.5 - 4 - 6 - 10 - 16 - 25 - 40 bar

TECHNICAL DATA

CODE	LADDER [bar]	COUPLER
20000380	0-1	1/2"
20000390	0-2,5	1/2"
20000400	0-4	1/2"
20000410	0-6	1/2"
20000420	0-10	1/2"
20000430	0-16	1/2"
20000440	0-25	1/2"
20000450	0-40	1/2"

ITEMS

CODE	DESCRIPTION
20000380	PRESSURE GAUGE Ø 100 WITH RADIAL CONNECTION, SCALE 0-1, 1/2"
20000390	PRESSURE GAUGE Ø 100 WITH RADIAL CONNECTION, SCALE 0-2,5, 1/2"
20000400	PRESSURE GAUGE Ø 100 WITH RADIAL CONNECTION, SCALE 0-4, 1/2"
20000410	PRESSURE GAUGE Ø 100 WITH RADIAL CONNECTION, SCALE 0-6, 1/2"
20000420	PRESSURE GAUGE Ø 100 WITH RADIAL CONNECTION, SCALE 0-10, 1/2"
20000430	PRESSURE GAUGE Ø 100 WITH RADIAL CONNECTION, SCALE 0-16, 1/2"
20000440	PRESSURE GAUGE Ø 100 WITH RADIAL CONNECTION, SCALE 0-25, 1/2"
20000450	PRESSURE GAUGE Ø 100 WITH RADIAL CONNECTION, SCALE 0-40, 1/2"

All rights relating to this publication are the exclusive property of Tecnosystemi SpA.

Tecnosystemi SpA reserves the right to make changes at any time and without notice, for technical or commercial needs.