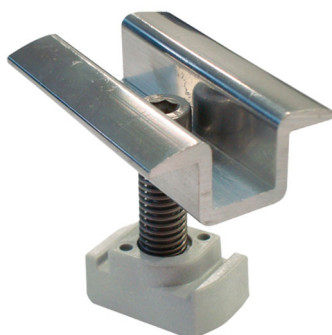


HSCP/60

pre-assembled central clamp

- cod. 11110810 - cod. 11110810BOX - cod. 11110811
- cod. 11110811BOX - cod. 11110812 - cod. 11110812BOX
- cod. 11110813 - cod. 11110813BOX - cod. 11110814
- cod. 11110814BOX - cod. 11110815 - cod. 11110815BOX



TECHNICAL SPECIFICATIONS:

- Material: aluminium alloy 6060
- Bracket length: 60mm
- A2 stainless steel screws and spring
- Acetal copolymer slider with Geomet® treatment steel plate
- M8 thread
- Supplied pre-assembled
- Available for panels from 30 mm to 56 mm
- Screw tightening with hex key 6

FULL SIZED:

CODE	For panels H [mm]
11110810	30-32-34
11110810BOX	30-32-34
11110811	35-36-38
11110811BOX	35-36-38
11110812	40-42-44
11110812BOX	40-42-44
11110813	45-46
11110813BOX	45-46
11110814	48-50
11110814BOX	48-50
11110815	56
11110815BOX	56

ITEMS

CODE	DESCRIPTION
11110810	PRE-ASSEMBLED CENTRAL BRACKET MOD HSCP/60 1
11110810BOX	PRE-ASSEMBLED CENTRAL BRACKET MOD HSCP/60 1 - BOX 50 pcs
11110811	PRE-ASSEMBLED CENTRAL BRACKET MOD HSCP/60 2
11110811BOX	PRE-ASSEMBLED CENTRAL BRACKET MOD HSCP/60 2 - BOX 50 pcs
11110812	PRE-ASSEMBLED CENTRAL BRACKET MOD HSCP/60 3
11110812BOX	PRE-ASSEMBLED CENTRAL BRACKET MOD HSCP/60 3 - BOX 50 pcs
11110813	PRE-ASSEMBLED CENTRAL BRACKET MOD HSCP/60 4
11110813BOX	PRE-ASSEMBLED CENTRAL BRACKET MOD HSCP/60 4 - BOX 50 pcs
11110814	PRE-ASSEMBLED CENTRAL BRACKET MOD HSCP/60 5
11110814BOX	PRE-ASSEMBLED CENTRAL BRACKET MOD HSCP/60 5 - BOX 50 pcs
11110815	PRE-ASSEMBLED CENTRAL BRACKET MOD HSCP/60 6
11110815BOX	PRE-ASSEMBLED CENTRAL BRACKET MOD HSCP/60 6 - BOX 50 pcs

All rights relating to this publication are the exclusive property of Tecnosystemi SpA.

Tecnosystemi SpA reserves the right to make changes at any time and without notice, for technical or commercial needs.