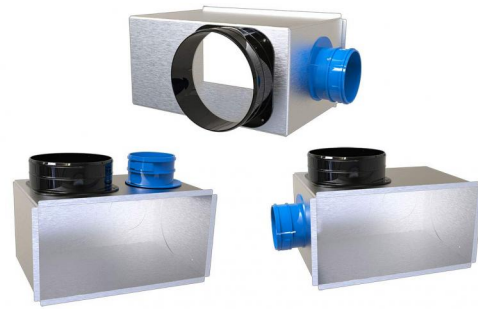


DATASHEET

rev. 00 - 28/10/22

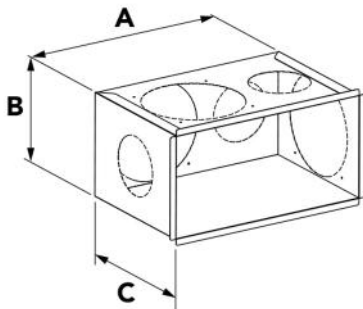
Insulated multi-intake plenum MVHR + clima

PWD400381 - PWD400382 - PWD400383
PWD400384 - PWD400385



TECHNICAL SPECIFICATIONS:

- Made of galvanized sheet metal
- Closed-cell polyethylene outer coating
- Pre-cut holes (upper, lower, side)
- Collar for hose coupling supplied (in table list of possible combinations).
- Pre-cut holes for MVHR
- Connectors for flexible CMV hose $\varnothing 92$ / $\varnothing 75$ on request



DIMENSIONS

CODE	NOZZLE DIMENSIONS [mm]	EXTERNAL DIMENSIONS PLENUM A x B [mm]	PLENUM DEPTH [mm]	PRE-CUTTING HOLE [mm]	REAR COLLAR MODEL	UPPER / LOWER COLLAR MODEL	SIDE COLLAR MODEL (R-L)
PWD400381	432 x 182	410 x 160	205	150		E5 \varnothing 150	
PWD400382	232 x 132	210 x 110	205	150		C3 OVAL \varnothing 125-150	
PWD400383	332 x 132	310 x 110	205	150		C3 OVAL \varnothing 125-150	
PWD400384	332 x 182	310 x 160	205	150		E5 \varnothing 150	
PWD400385	432 x 132	410 x 110	205	150		C3 OVAL \varnothing 125-150	

ITEMS

CODE	DESCRIPTION
PWD400381	
PWD400382	
PWD400383	
PWD400384	
PWD400385	