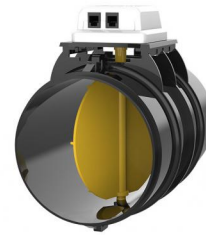


SIRIO 2.0 POINT

motorised butterfly damper in plastic material

GAD300001 - GAD300002 - GAD300003
 GAD300004 - GAD300005 - GAD300007
 GAD300008 - GAD300009 - GAD300010
 GAD300011



DESCRIPTION

The "Sirio 2.0 Point" system allows the management of the temperature or air flow for each room, without the aid of any control unit or a particular command.

The motorised circular damper integrates perfectly with new and existing ducted systems in which it is necessary to manage only part of the ducted system: this solution does not require the installation of any system that manages the switching on/off of the internal unit or the movement of the motorised Bypass.

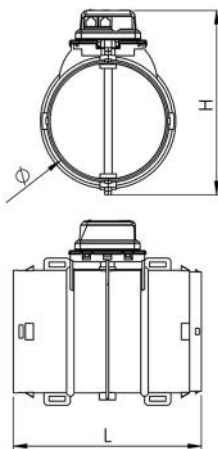
It therefore allows management of the air flow in the individual rooms without the aid of an electronic control unit for operation.

It is equipped with auxiliary ON/OFF input and output contacts.

It can be controlled by thermostats, ON/OFF switches or integration with home automation system by means of clean contact.

TECHNICAL SPECIFICATIONS:

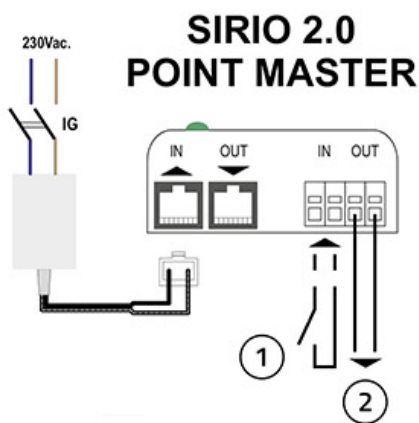
- Anti-condensation ABS plastic
- Auxiliary IN/OUT contact
- Power supply: 220V
- Power supply included ("MASTER" version)
- "SLAVE" version without power supply
- Opening butterfly ON / OFF
- Removable, rotatable motor for easy maintenance
- Operating temperature 0°C A +70°C
- Max conveyance length 25 m
- A maximum of 8 dampers can be installed in ducting
- SIRIO 2.0 PACK system installed on plenum available on request



DIMENSIONS

CODE	A [mm]	B [mm]	Ø1 [mm]
GAD300001	230	360	100
GAD300002	230		150
GAD300003	280	250	200
GAD300004	330	280	250
GAD300005	380	350	300
GAD300007	230	360	100
GAD300008	230		150
GAD300009	280	250	200
GAD300010	330	280	250
GAD300011	380	350	300

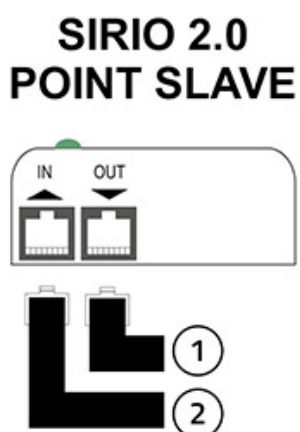
WIRING DIAGRAM SIRIO 2.0 POINT MASTER



[1] Contact closed: opens the damper; contact open: closes the damper

[2] Closes at the opening of the damper; opens at the closing of the damper

WIRING DIAGRAM SIRIO 2.0 POINT SLAVE



[1] "IN" cable of the "Sirio 2.0 Slave"

[2] "OUT" cable of the "Sirio 2.0 Slave"

TECHNICAL DATA

MAX AIR FLOW RATE [m³/h]	
152	
388	
678	
1060	
1526	
152	
388	
678	
1060	
1526	

ITEMS

CODE	DESCRIPTION
GAD300001	ELECTRIC BUTTERFLY "SIRIO 2.0" - Ø 100 - MASTER
GAD300002	ELECTRIC BUTTERFLY "SIRIO 2.0" - Ø 150- MASTER
GAD300003	ELECTRIC BUTTERFLY "SIRIO 2.0" - Ø 200- MASTER
GAD300004	ELECTRIC BUTTERFLY "SIRIO 2.0" - Ø 250- MASTER
GAD300005	ELECTRIC BUTTERFLY "SIRIO 2.0" - Ø 300- MASTER
GAD300007	ELECTRIC BUTTERFLY "SIRIO 2.0" - Ø 100 - SLAVE
GAD300008	ELECTRIC BUTTERFLY "SIRIO 2.0" - Ø 150- SLAVE
GAD300009	ELECTRIC BUTTERFLY "SIRIO 2.0" - Ø 200- SLAVE
GAD300010	ELECTRIC BUTTERFLY "SIRIO 2.0" - Ø 250- SLAVE
GAD300011	ELECTRIC BUTTERFLY "SIRIO 2.0" - Ø 300- SLAVE