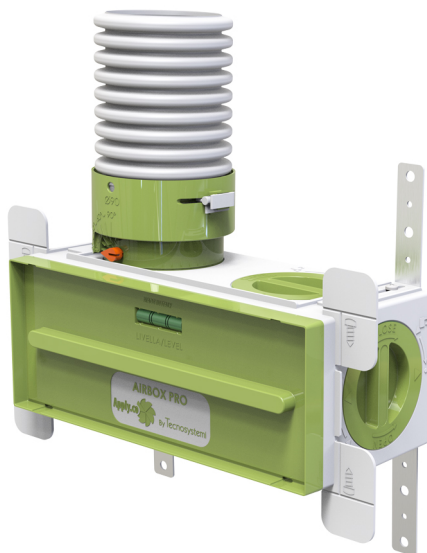


AIRBOX

ABS plastic plenum for CMV

- cod. ACD600088 - cod. ACD600092 - cod. ACD600089
- cod. ACD600090 - cod. ACD600157



TECHNICAL SPECIFICATIONS:

- Plenum made of PS plastic (polystyrene)
- Fixing can be performed on both plasterboard and masonry with a minimum depth of 100 mm up to 150 mm
- Fixing on plasterboard by self-tapping screws on the 4 side fins
- With built-in bubble
- Possibility for spirit level installation work site cover or inside Airbox Box
- Protective cover plaster complete with extraction handle
- No. 4 metal brackets 80 x 80 for rear fixing supplied
- Sleeves complete with calibration damper with graduated adjustment by screwdriver
- Complete hose clamps
- Possibility to break side flaps for wall insertion
- Choice of up to 4 grille models in ABS plastic RAL 9016 finish
- Possibility of up to 5 inlets for $\varnothing 75$ and $\varnothing 90$ sleeves

ITEMS

CODE	DESCRIPTION
ACD600088	CMV PLENUM IN POLYSTYRE WITH SLEEVE FOR PIPE $\varnothing 75$ - "AIRBOX PRO"
ACD600092	CMV PLENUM IN POLYSTYRE WITH SLEEVE FOR PIPE $\varnothing 90$ - "AIRBOX PRO"
ACD600089	SLEEVE KIT FOR PIPE $\varnothing 75$
ACD600090	SLEEVE KIT FOR PIPE $\varnothing 90$
ACD600157	SET OF CAPS FOR CMV

All rights relating to this publication are the exclusive property of Tecnosystemi SpA.

Tecnosystemi SpA reserves the right to make changes at any time and without notice, for technical or commercial needs.