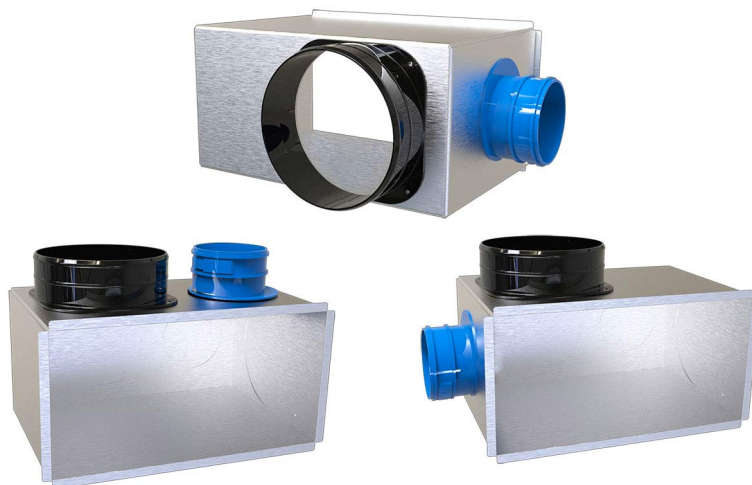


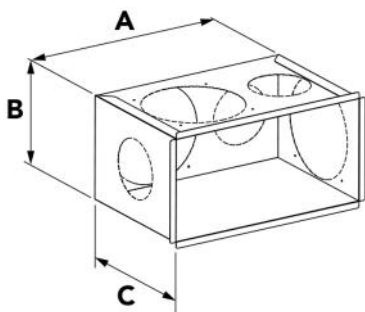
Insulated multi-intake plenum MVHR + clima

- cod. PWD400381 - cod. PWD400382 - cod. PWD400383
- cod. PWD400384 - cod. PWD400385



TECHNICAL SPECIFICATIONS:

- Made of galvanized sheet metal
- Closed-cell polyethylene outer coating
- Pre-cut holes (upper, lower, side)
- Collar for hose coupling supplied (in table list of possible combinations).
- Pre-cut holes for MVHR
- Connectors for flexible CMV hose $\varnothing 92 / \varnothing 75$ on request



DIMENSIONS

CODE	NOZZLE DIMENSIONS [mm]	EXTERNAL DIMENSIONS PLENUM A x B [mm]	PLENUM DEPTH [mm]	PRE-CUTTING HOLE [mm]	REAR COLLAR MODEL	UPPER / LOWER COLLAR MODEL	SIDE COLLAR MODEL (R-L)
PWD400381	432 x 182	410 x 160	205	150		E5 Ø 150	
PWD400382	232 x 132	210 x 110	205	150		C3 OVAL Ø 125-150	
PWD400383	332 x 132	310 x 110	205	150		C3 OVAL Ø 125-150	
PWD400384	332 x 182	310 x 160	205	150		E5 Ø 150	
PWD400385	432 x 132	410 x 110	205	150		C3 OVAL Ø 125-150	

ITEMS

CODE	DESCRIPTION
PWD400381	
PWD400382	
PWD400383	
PWD400384	
PWD400385	

All rights relating to this publication are the exclusive property of Tecnosystemi SpA.

Tecnosystemi SpA reserves the right to make changes at any time and without notice, for technical or commercial needs.