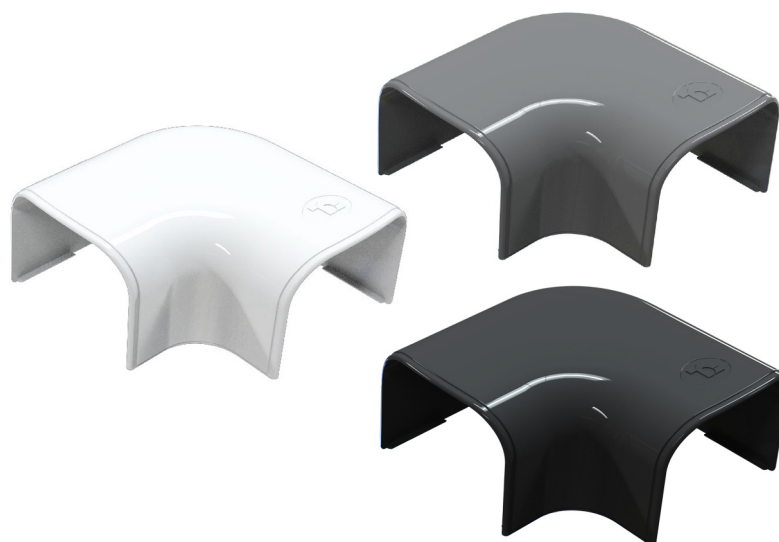


OPTIMA CP

flat curve

- cod. SCD100137 - cod. 11106007 - cod. 11106008
- cod. 11106009 - cod. SCD100114 - cod. SCD100155
- cod. SCD100156 - cod. SCD100157 - cod. SCD100206
- cod. SCD100207 - cod. SCD100208



TECHNICAL SPECIFICATIONS:

- Stiff, shockproof, anti-UVA PVC, white or grey, recyclable
- Innovative design
- Ultra-fast interlocking fastening system
- Extremely high outer finish
- Heat shrink barcode packaging
- Paintable
- Operating temperature -20°C / +60°C

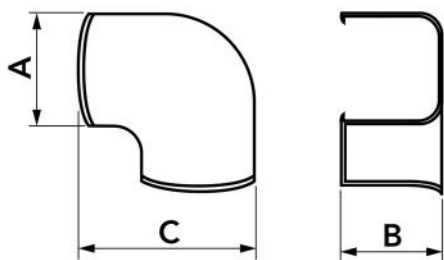
MODELS AVAILABLE:



WHITE RAL 9010



GREY
ANTRACITE RAL
7016



DIMENSIONS

CODE	MODEL	A [mm]	B [mm]	C [mm]
SCD100137	CP 35 - OPT	35	28	65
11106007	CP 62 - OPT	66	48	108
11106008	CP 75 - OPT	78	58	120
11106009	CP 102 - OPT	104	68	154
SCD100114	CP 135 - OPT	140	84	203
SCD100155	CP 75 - OPT	78	58	120
SCD100156	CP 75 - OPT	78	58	120
SCD100157	CP 102 - OPT	104	68	154
SCD100206	CP 135 - OPT	140	84	203

ITEMS

CODE	DESCRIPTION
SCD100137	CP35OPT - "OPTIMA CP" LINE FLAT ELBOW
11106007	CP62 OPT - "OPTIMA CP" LINE FLAT ELBOW
11106008	CP75-OPT - "OPTIMA CP" LINE FLAT ELBOW
11106009	CP102-OPT - "OPTIMA CP" LINE FLAT ELBOW
SCD100114	CP135-OPT - "OPTIMA CP" LINE FLAT ELBOW
SCD100155	"OPTIMA CP" LINE FLAT ELBOW - ANTHRACITE GREY Mod. CP75-OPT
SCD100156	"OPTIMA CP" LINE FLAT ELBOW - ANTHRACITE GREY Mod. CP102-OPT
SCD100157	"OPTIMA CP" LINE FLAT ELBOW - ANTHRACITE GREY Mod. CP135-OPT
SCD100206	"OPTIMA CP" LINE FLAT ELBOW - BLACK - CP75-OPT
SCD100207	"OPTIMA CP" LINE FLAT ELBOW - BLACK - CP102-OPT
SCD100208	"OPTIMA CP" LINE FLAT ELBOW - BLACK - CP135-OPT

All rights relating to this publication are the exclusive property of Tecnosystemi SpA.

Tecnosystemi SpA reserves the right to make changes at any time and without notice, for technical or commercial needs.