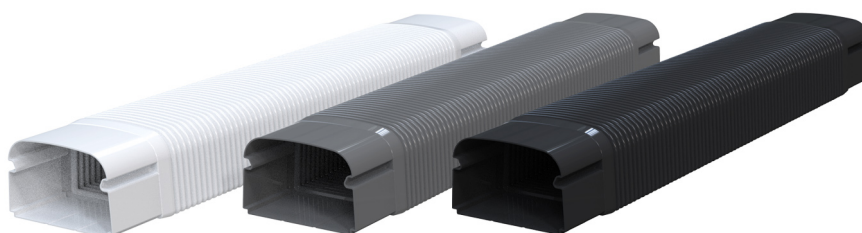


OPTIMA MF

flexible sleeve



- cod. 11106041 - cod. 11106042 - cod. 11106043
- cod. SCD100179 - cod. SCD100180 - cod. SCD100228
- cod. SCD100229



TECHNICAL SPECIFICATIONS:

- Made of polyethylene
- Innovative design
- Ultra-fast interlocking fastening system
- Extremely high outer finish
- Heat shrink barcode packaging
- Paintable

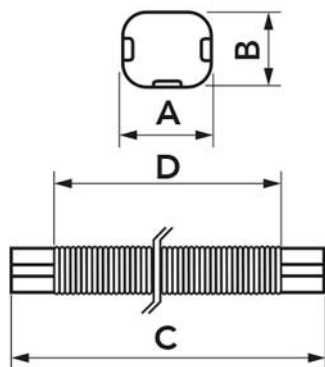
MODELS AVAILABLE:



WHITE RAL 9010



GREY
ANTRACITE RAL
7016



DIMENSIONS

CODE	MODEL	A [mm]	B [mm]	C [mm]	D [mm]
11106041	MF 62 - OPT	62	46	520	420
11106042	MF 75 - OPT	74	56	520	420
11106043	MF 102 - OPT	100	66	520	420
SCD100179	MF 75 - OPT	74	56	520	420
SCD100180	MF 102 - OPT	100	66	520	420
SCD100228	MF 75 - OPT	74	56	520	420
SCD100229	MF 102 - OPT	100	66	520	420

ITEMS

CODE	DESCRIPTION
11106041	MF62-OPT - "OPTIMA MF" LINE FLEXIBLE SLEEVE
11106042	MF75-OPT - "OPTIMA MF" LINE FLEXIBLE SLEEVE
11106043	MF102-OPT - "OPTIMA MF" LINE FLEXIBLE SLEEVE
SCD100179	"OPTIMA MF" LINE FLEXIBLE SLEEVE - ANTHRACITE GREY Mod. MF75-OPT
SCD100180	"OPTIMA MF" LINE FLEXIBLE SLEEVE - ANTHRACITE GREY Mod. MF102-OPT
SCD100228	"OPTIMA MF" LINE FLEXIBLE SLEEVE - BLACK - MF75-OPT
SCD100229	"OPTIMA MF" LINE FLEXIBLE SLEEVE - BLACK - MF102-OPT

All rights relating to this publication are the exclusive property of Tecnosystemi SpA.

Tecnosystemi SpA reserves the right to make changes at any time and without notice, for technical or commercial needs.