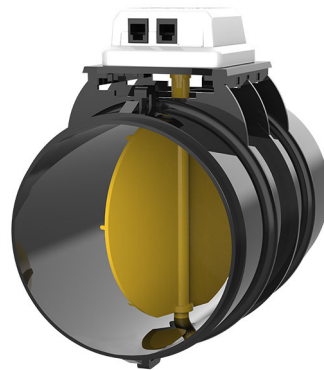


SIRIO 2.0 POINT

motorised butterfly damper in plastic material

- cod. GAD300001 - cod. GAD300002 - cod. GAD300003
- cod. GAD300004 - cod. GAD300005 - cod. GAD300007
- cod. GAD300008 - cod. GAD300009 - cod. GAD300010
- cod. GAD300011



DESCRIPTION

The "Sirio 2.0 Point" system allows the management of the temperature or air flow for each room, without the aid of any control unit or a particular command.

The motorised circular damper integrates perfectly with new and existing ducted systems in which it is necessary to manage only part of the ducted system: this solution does not require the installation of any system that manages the switching on/off of the internal unit or the movement of the motorised Bypass.

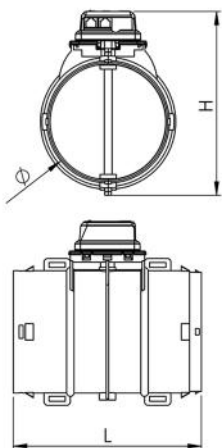
It therefore allows management of the air flow in the individual rooms without the aid of an electronic control unit for operation.

It is equipped with auxiliary ON/OFF input and output contacts.

It can be controlled by thermostats, ON/OFF switches or integration with home automation system by means of clean contact.

TECHNICAL SPECIFICATIONS:

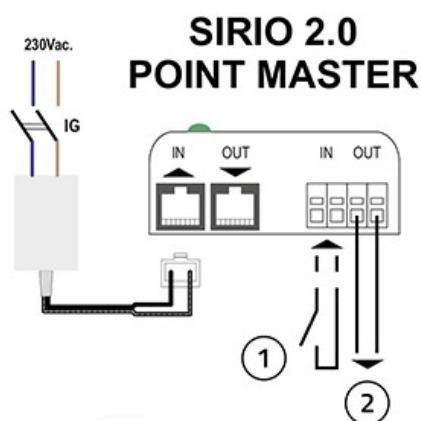
- Anti-condensation ABS plastic
- Auxiliary IN/OUT contact
- Power supply: 220V
- Power supply included ("MASTER" version)
- "SLAVE" version without power supply
- Opening butterfly ON / OFF
- Removable, rotatable motor for easy maintenance
- Operating temperature 0°C A +70°C
- Max conveyance length 25 m
- A maximum of 8 dampers can be installed in ducting
- SIRIO 2.0 PACK system installed on plenum available on request



DIMENSIONS

| CODE | A [mm] | B [mm] | Ø1 [mm] |
|-----------|--------|--------|---------|
| GAD300001 | 230 | 360 | 100 |
| GAD300002 | 230 | | 150 |
| GAD300003 | 280 | 250 | 200 |
| GAD300004 | 330 | 280 | 250 |
| GAD300005 | 380 | 350 | 300 |
| GAD300007 | 230 | 360 | 100 |
| GAD300008 | 230 | | 150 |
| GAD300009 | 280 | 250 | 200 |
| GAD300010 | 330 | 280 | 250 |
| GAD300011 | 380 | 350 | 300 |

WIRING DIAGRAM SIRIO 2.0 POINT MASTER



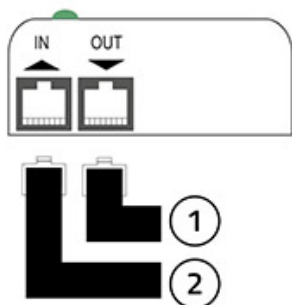
[1] Contact closed: opens the damper; contact open: closes the damper

[2] Closes at the opening of the damper; opens at the closing of the damper

WIRING DIAGRAM SIRIO 2.0 POINT SLAVE

[1] "IN" cable of the "Sirio 2.0 Slave"
 [2] "OUT" cable of the "Sirio 2.0 Slave"

SIRIO 2.0 POINT SLAVE



TECHNICAL DATA

| MAX AIR FLOW RATE [m³/h] | |
|--------------------------|--|
| 152 | |
| 388 | |
| 678 | |
| 1060 | |
| 1526 | |
| 152 | |
| 388 | |
| 678 | |
| 1060 | |
| 1526 | |

ITEMS

| CODE | DESCRIPTION |
|-----------|---|
| GAD300001 | ELECTRIC BUTTERFLY "SIRIO 2.0" - Ø 100 - MASTER |
| GAD300002 | ELECTRIC BUTTERFLY "SIRIO 2.0" - Ø 150- MASTER |
| GAD300003 | ELECTRIC BUTTERFLY "SIRIO 2.0" - Ø 200- MASTER |
| GAD300004 | ELECTRIC BUTTERFLY "SIRIO 2.0" - Ø 250- MASTER |
| GAD300005 | ELECTRIC BUTTERFLY "SIRIO 2.0" - Ø 300- MASTER |
| GAD300007 | ELECTRIC BUTTERFLY "SIRIO 2.0" - Ø 100 - SLAVE |
| GAD300008 | ELECTRIC BUTTERFLY "SIRIO 2.0" - Ø 150- SLAVE |
| GAD300009 | ELECTRIC BUTTERFLY "SIRIO 2.0" - Ø 200- SLAVE |
| GAD300010 | ELECTRIC BUTTERFLY "SIRIO 2.0" - Ø 250- SLAVE |
| GAD300011 | ELECTRIC BUTTERFLY "SIRIO 2.0" - Ø 300- SLAVE |

All rights relating to this publication are the exclusive property of Tecnosystemi SpA.

Tecnosystemi SpA reserves the right to make changes at any time and without notice, for technical or commercial needs.