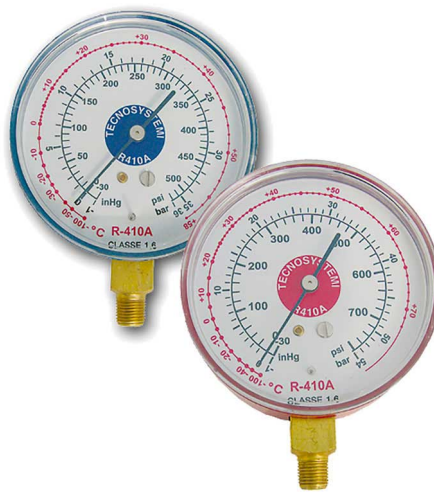


Low and high pressure dry pressure gauge for gas R410A - TR422ABCD (R22) - R407C

- cod. RIC00012 - cod. RIC00013 - cod. RIC00023
- cod. RIC00022



DESCRIPTION

Bourdon type dry pressure gauge 80 mm diameter and 1/8" npt radial coupler.

Housed in a blue or red steel guard to ensure it has long life.

Thanks to the transparent part made of polycarbonate, the meter is easily readable.

There are also different technical characteristics that ensure greater accuracy of the instrument and protection that allow a great reduction of the needle's pulsation.

The pressure gauge can be used with R410A gas.

ITEMS

CODE	DESCRIPTION
RIC00012	BLUE LOW PRESSURE GAUGE FOR R410A GAS
RIC00013	RED HIGH PRESSURE GAUGE FOR R410A GAS
RIC00023	RED HIGH PRESSURE GAUGE FOR R22-R407C-R410A GASES
RIC00022	BLUE LOW PRESSURE GAUGE FOR R22-R407C-R410A GASES

All rights relating to this publication are the exclusive property of Tecnosystemi SpA.

Tecnosystemi SpA reserves the right to make changes at any time and without notice, for technical or commercial needs.