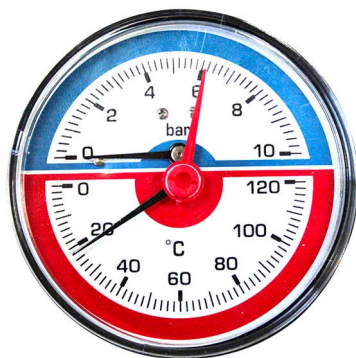


Ø 80 thermomanometer with rear coupler

- cod. 20000650 - cod. 20000660



TECHNICAL SPECIFICATIONS:

- ABS case and dial
- Plastic glass (Lustran)
- Class 1.6
- Copper alloy spring
- Red reference needle
- Includes 1/4" F x 1/2" M check valve
- Operating temperature -20°C to +120°C

TECHNICAL DATA

CODE	SCALE [bar/°C]
20000650	0-6-0/120°C
20000660	0-10-0/120°

ITEMS

CODE	DESCRIPTION
20000650	THERMOMANOMETER Ø 80 WHIT REAR CONNECTION, SCALE 0-6-0/120°
20000660	THERMOMANOMETER Ø 80 WHIT REAR CONNECTION, SCALE 0-10-0/120°

All rights relating to this publication are the exclusive property of Tecnosystemi SpA.

Tecnosystemi SpA reserves the right to make changes at any time and without notice, for technical or commercial needs.