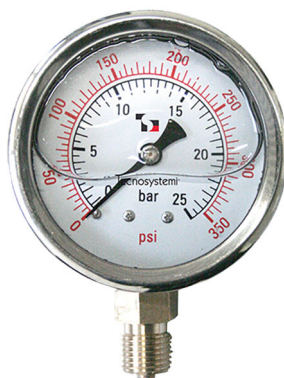


Pressure gauge Ø 63 for gas / water in glycerine bath

- cod. 20000300 - cod. 20000310 - cod. 20000320
- cod. 20000330 - cod. 20000340 - cod. 20000350
- cod. 20000360 - cod. 20000370



TECHNICAL SPECIFICATIONS:

- Stainless steel case
- Plastic glass
- ABS dial
- Double reading scale (bar, psi)
- Class 1.6
- Copper alloy spring
- Operating temperature -20°C to +80°C
- Reference standard UNI EN 2004/22/EC
- Scale available in 1 - 2.5 - 4 - 6 - 10 - 16 - 25 - 40 bar

TECHNICAL DATA

CODE	LADDER [bar]	COUPLER
20000300	0-1	1/4"
20000310	0-2,5	1/4"
20000320	0-4	1/4"
20000330	0-6	1/4"
20000340	0-10	1/4"
20000350	0-16	1/4"
20000360	0-25	1/4"
20000370	0-40	1/4"

ITEMS

CODE	DESCRIPTION
20000300	PRESSURE GAUGE Ø 63 WITH RADIAL CONNECTION, SCALE 0-1, 1/4"
20000310	PRESSURE GAUGE Ø 63 WITH RADIAL CONNECTION, SCALE 0-2,5, 1/4"
20000320	PRESSURE GAUGE Ø 63 WITH RADIAL CONNECTION, SCALE 0-4 1/4"
20000330	PRESSURE GAUGE Ø 63 WITH RADIAL CONNECTION, SCALE 0-6, 1/4"
20000340	PRESSURE GAUGE Ø 63 WITH RADIAL CONNECTION, SCALE 0-10, 1/4"
20000350	PRESSURE GAUGE Ø 63 WITH RADIAL CONNECTION, SCALE 0-16, 1/4"
20000360	PRESSURE GAUGE Ø 63 WITH RADIAL CONNECTION, SCALE 0-25, 1/4"
20000370	PRESSURE GAUGE Ø 63 WITH RADIAL CONNECTION, SCALE 0-40, 1/4"

All rights relating to this publication are the exclusive property of Tecnosystemi SpA.

Tecnosystemi SpA reserves the right to make changes at any time and without notice, for technical or commercial needs.