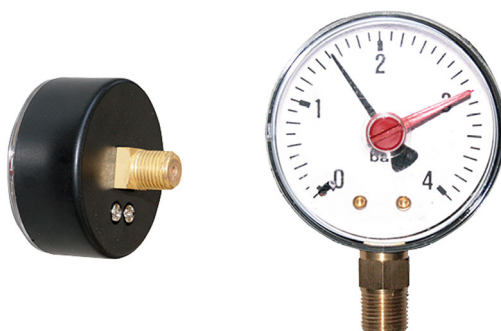


Water pressure gauge Ø 60 with red hand

- cod. 20000090 - cod. 20000100 - cod. 20000110
- cod. 20000120 - cod. 20000130 - cod. 20000140
- cod. 20000150 - cod. 20000160 - cod. 20000170



TECHNICAL SPECIFICATIONS:

- ABS case and dial
- Plastic glass (Lustran)
- Class 1.6
- Includes red needle
- Copper alloy spring
- Operating temperature -20°C to +80°C
- Reference standard UNI EN 2004/22/EC
- Scale available in 4 - 6 - 10 - 16 bar

TECHNICAL DATA

CODE	LADDER [bar]	COUPLER
20000090	0-4	1/4
20000100	0-6	1/4
20000110	0-10	1/4
20000120	0-16	1/4
20000130	0-25	1/4
20000140	0-4	1/4
20000150	0-6	1/4
20000160	0-10	1/4
20000170	0-16	1/4

ITEMS

CODE	DESCRIPTION
20000090	PRESSURE GAUGE Ø 60 WITH RADIAL CONNECTION, SCALE 0-4, 1/4"
20000100	PRESSURE GAUGE Ø 60 WITH RADIAL CONNECTION, SCALE 0-6, 1/4"
20000110	PRESSURE GAUGE Ø 60 WITH RADIAL CONNECTION, SCALE 0-10, 1/4"
20000120	PRESSURE GAUGE Ø 60 WITH RADIAL CONNECTION, SCALE 0-16, 1/4"
20000130	PRESSURE GAUGE Ø 60 WITH RADIAL CONNECTION, SCALE 0-25, 1/4"
20000140	PRESSURE GAUGE Ø 60 WITH REARCONNECTION, SCALE 0-4, 1/4"
20000150	PRESSURE GAUGE Ø 60 WITH REAR CONNECTION, SCALE 0-6, 1/4"
20000160	PRESSURE GAUGE Ø 60 WITH REAR CONNECTION, SCALE 0-10, 1/4"
20000170	PRESSURE GAUGE Ø 60 WITH REAR CONNECTION, SCALE 0-16, 1/4"

All rights relating to this publication are the exclusive property of Tecnosystemi SpA.

Tecnosystemi SpA reserves the right to make changes at any time and without notice, for technical or commercial needs.