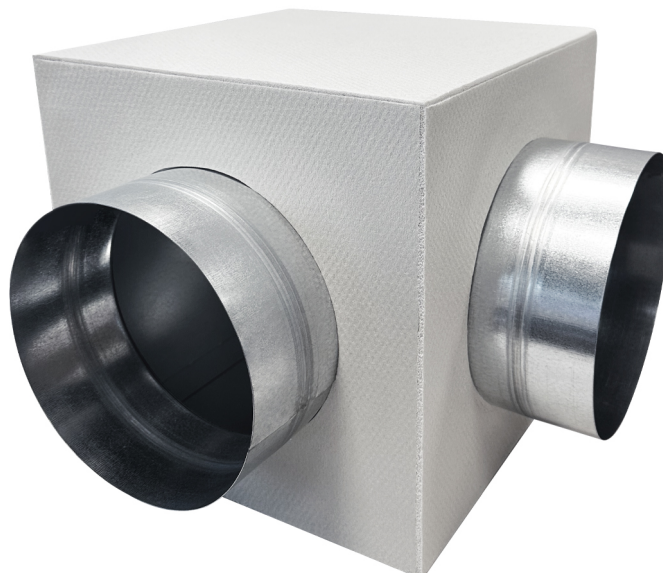


# Plenum for "CANOVA" diffusers

- cod. PWD200033 - cod. PWD200034 - cod. PWD200035

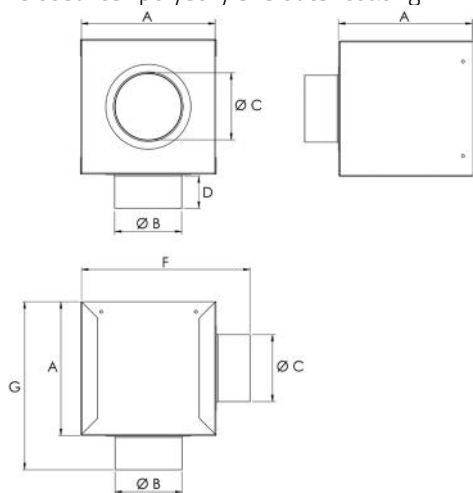


## DESCRIPTION

The plenum is made of insulated sheet metal.  
Disponibile in tre modelli:  $\varnothing 100$ ,  $\varnothing 125$  e  $\varnothing 160$

## TECHNICAL SPECIFICATIONS

- Made of electro-galvanised sheet metal
- Closed-cell polyethylene outer coating



## DIMENSIONS

CODE	A [mm]	B [mm]	C [mm]	D [mm]	F [mm]	G [mm]
PWD200033	205	100		50	252	251
PWD200034	205	125		50	252	251
PWD200035	255	160	150	50		300

## ITEMS

CODE	DESCRIPTION
PWD200033	PLENUM FOR DIFFUSER "CANOVA" Ø100
PWD200034	PLENUM FOR DIFFUSER "CANOVA" Ø125
PWD200035	PLENUM FOR DIFFUSER "CANOVA" Ø160

All rights relating to this publication are the exclusive property of Tecnosystemi SpA.

Tecnosystemi SpA reserves the right to make changes at any time and without notice, for technical or commercial needs.