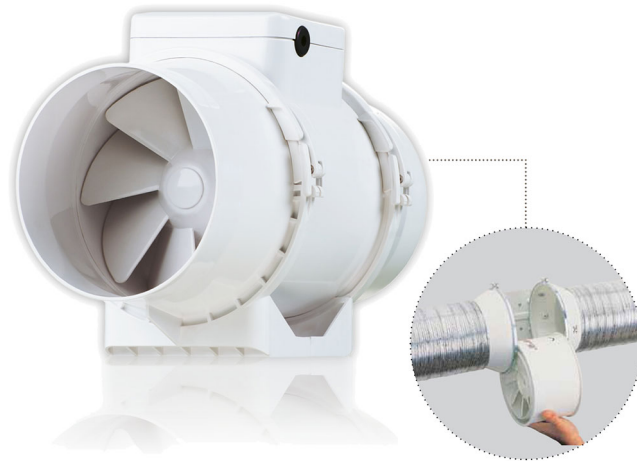


Mixed flow in-line fan

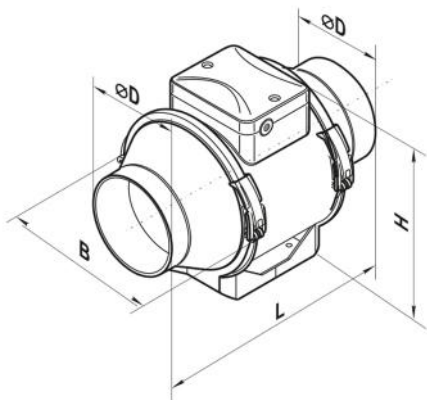
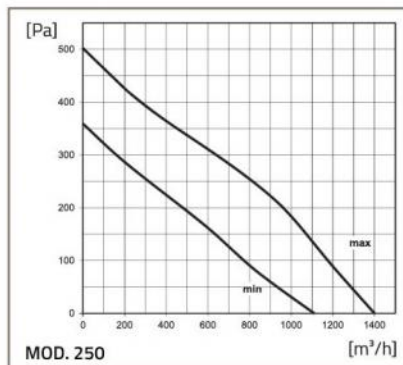
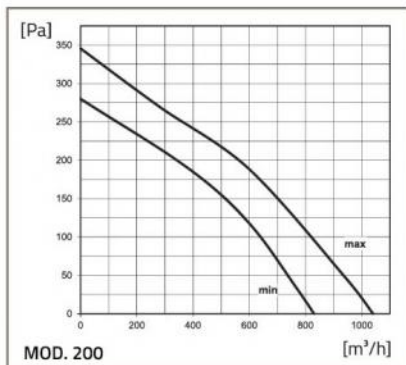
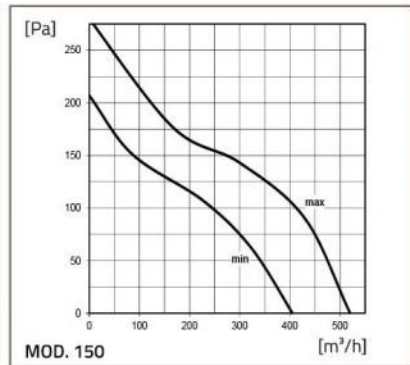
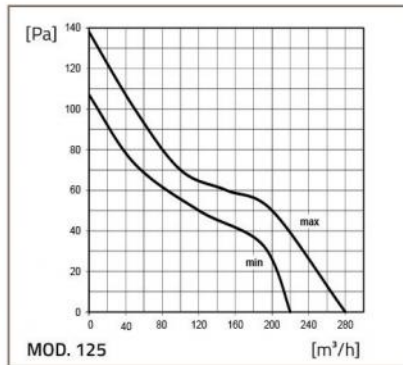
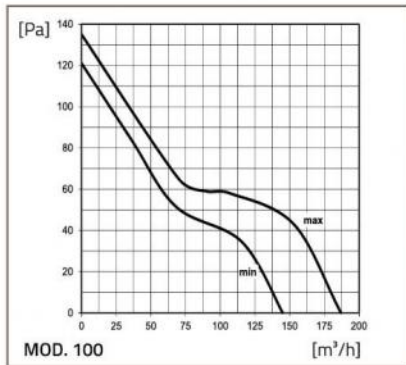
- cod. 30360150 - cod. 30360160 - cod. 30360170
- cod. 30360250 - cod. 30360260



TECHNICAL SPECIFICATIONS:

- Made of ABS
- Easy to install and inspect
- 2 speeds
- Operable via ON / OFF switch (not supplied)
- Recommended for kitchens, bathrooms, offices, shops

FLOW RATE DIAGRAMS



DIMENSIONS

CODE	Ø D [mm]	B [mm]	H [mm]	L [mm]	WEIGHT [kg]
30360150	96	167	190	246	1,4
30360160	123	167	190	246	1,8
30360170	146	223	250	295	3,2
30360250	199	239	261	295,5	4
30360260	247	287	323	383	7,8

TECHNICAL DATA

MODEL	Ø 100		Ø 125		Ø 150		Ø 200		Ø 250	
Power supply [V]	230	230	230	230	230	230	230	230	230	230
Frequency [Hz]	50	50	50	50	50	50	50	50	50	50
Speed	min.	max.	min.	max.	min.	max.	min.	max.	min.	max.
Power [W]	21	33	23	37	30	60	76	108	125	177
Absorbed current [A]	0,11	0,21	0,18	0,27	0,17	0,27	0,34	0,48	0,54	0,79
Air flow rate [m³/h]	145	187	220	280	405	520	830	1040	1110	1400
RPM	2180	2385	1950	2455	1680	2460	1915	2380	1955	2440
Sound level 3 m [dB(A)]	27	36	28	37	33	44	45	52	47	55
Operating temperature max [°C]	60	60	60	60	60	60	60	60	60	60
Protection rating [IP]	X4									X4

ITEMS

CODE	DESCRIPTION
30360150	MIXED-FLOW FANS - "IN LINEA" MODEL 100
30360160	MIXED-FLOW FANS - "IN LINEA" MODEL 125
30360170	MIXED-FLOW FANS - "IN LINEA" MODEL 150
30360250	MIXED-FLOW FANS - "IN LINEA" MODEL 200
30360260	MIXED-FLOW FANS - "IN LINEA" MODEL 250

All rights relating to this publication are the exclusive property of Tecnosystemi SpA.

Tecnosystemi SpA reserves the right to make changes at any time and without notice, for technical or commercial needs.