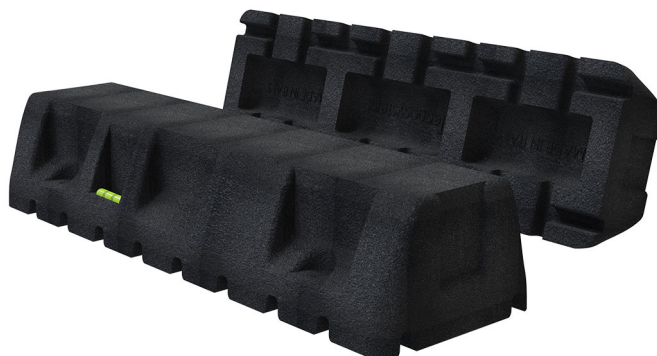


# SBR EXTREME 100-A

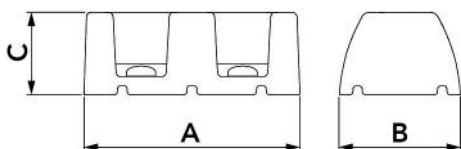
SBR EXTREME 100-8 vulcanised rubber vibration-resistant floor base

- cod. 11105059 - cod. SCD500245 - cod. SCD500246  
- cod. 11105071 - cod. 11105072



## TECHNICAL SPECIFICATIONS:

- Floor bases in SBR vulcanised rubber
- Built-in spirit level
- Non-slip, water-draining resting base in armed body
- Self-tapping screws supplied
- Direct fastening of the screws on the support
- Ideal for the fastening of outdoor condensing units, VRV-VRF, base-mounted boilers, electrical or tube channels



## DIMENSIONS

CODE	A [mm]	B [mm]	C [mm]
11105059	250	140	95
SCD500245	450	140	95
SCD500246	600	140	95
11105071	1000	140	95
11105072	1200	140	95

## EXAMPLE OF INSTALLATION:



## TECHNICAL DATA

CODE	LOAD CAPACITY [kg]
11105059	200
SCD500245	300
SCD500246	500
11105071	650
11105072	750

## ITEMS

CODE	DESCRIPTION
11105059	SBR "EXTREME-A" 250 - FOOT MOUNT W/O ALU PROFILE
SCD500245	SBR "EXTREME-A" 450 - FOOT MOUNT W/O ALU PROFILE
SCD500246	SBR "EXTREME-A" 600 - FOOT MOUNT W/O ALU PROFILE
11105071	SBR "EXTREME-A" 1000 - FOOT MOUNT W/O ALU PROFILE
11105072	SBR "EXTREME-A" 1200 - FOOT MOUNT W/O ALU PROFILE

All rights relating to this publication are the exclusive property of Tecnosystemi SpA.

Tecnosystemi SpA reserves the right to make changes at any time and without notice, for technical or commercial needs.