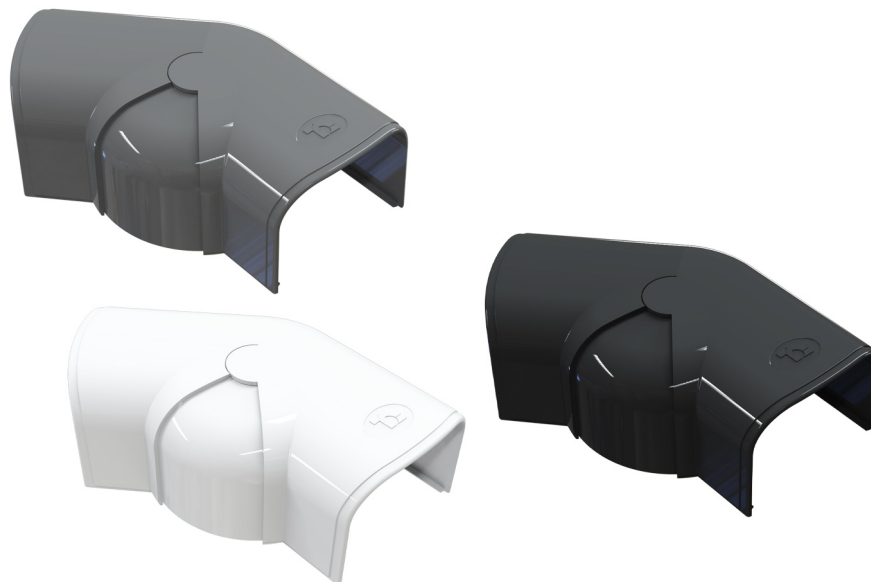


OPTIMA CPS

articulated flat curve



- cod. 11106010 - cod. 11106011 - cod. SCD100158
- cod. SCD100209



TECHNICAL SPECIFICATIONS:

- Stiff, shockproof, anti-UVA PVC, white or grey, recyclable
- Innovative design
- Ultra-fast interlocking fastening system
- Bending radius
- Adjustable from 80° to 140°
- Extremely high outer finish
- Heat shrink barcode packaging
- Paintable
- Operating temperature -20°C / +60°C

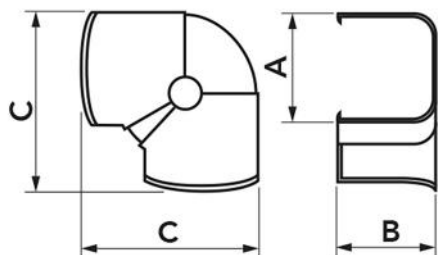
MODELS AVAILABLE:



WHITE RAL 9010



GREY
ANTRACITE RAL
7016



DIMENSIONS

CODE	MODEL	A [mm]	B [mm]	C [mm]
11106010	CPS 62 - OPT	66	48	185
11106011	CPS 75 - OPT	78	58	130
SCD100158	CPS 75 - OPT	78	58	130
SCD100209	CPS 75 - OPT	78	58	130

ITEMS

CODE	DESCRIPTION
11106010	CPS62-OPT - "OPTIMA CPS" LINE FLAT JOINTED ELBOW
11106011	CPS75-OPT - "OPTIMA CPS" LINE FLAT JOINTED ELBOW
SCD100158	"OPTIMA CPS" LINE FLAT JOINTED ELBOW - ANTHRACITE GREY Mod. CPS75-OPT
SCD100209	"OPTIMA CPS" LINE FLAT JOINTED ELBOW - BLACK - CPS75-OPT

All rights relating to this publication are the exclusive property of Tecnosystemi SpA.

Tecnosystemi SpA reserves the right to make changes at any time and without notice, for technical or commercial needs.