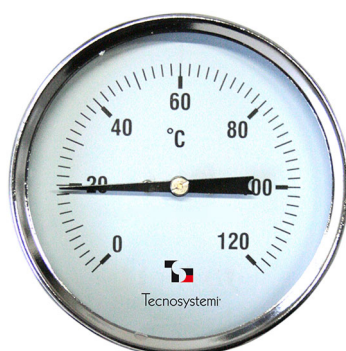


# Ø 80 bi-metal immersion thermometer with rear coupler

- cod. 20000700 - cod. 20000710 - cod. 20000720  
- cod. 20000730 - cod. 20000740 - cod. 20000750



## TECHNICAL SPECIFICATIONS:

- Steel case
- Plexiglas glass
- Aluminium dial
- Accuracy  $\pm 2^{\circ}\text{C}$
- Brass stem with  $\varnothing 1/2''$  coupling included
- Bimetallic spiral
- Operating temperature  $-30^{\circ}\text{C}$  to  $+50^{\circ}\text{C}$

## TECHNICAL DATA

CODE	SCALE [ $^{\circ}\text{C}$ ]	STEM [mm]
20000700	0-120	50
20000710	0-120	100
20000720	0-120	50
20000730	0-120	100
20000740	0-120	50
20000750	0-120	100

## ITEMS

CODE	DESCRIPTION
20000700	DUAL METAL THERMOMETER Ø 60, SCALE 0-120°C, STEM 50MM
20000710	DUAL METAL THERMOMETER Ø 60, SCALE 0-120°C, STEM 100MM
20000720	DUAL METAL THERMOMETER Ø 80, SCALE 0-120°C, STEM 50MM
20000730	DUAL METAL THERMOMETER Ø 80, SCALE 0-120°C, STEM 100MM
20000740	DUAL METAL THERMOMETER Ø 100, SCALE 0-120°C, STEM 50MM
20000750	DUAL METAL THERMOMETER Ø 100, SCALE 0-120°C, STEM 100MM

All rights relating to this publication are the exclusive property of Tecnosystemi SpA. Tecnosystemi SpA reserves the right to make changes at any time and without notice, for technical or commercial needs.

All rights relating to this publication are the exclusive property of Tecnosystemi SpA.

Tecnosystemi SpA reserves the right to make changes at any time and without notice, for technical or commercial needs.