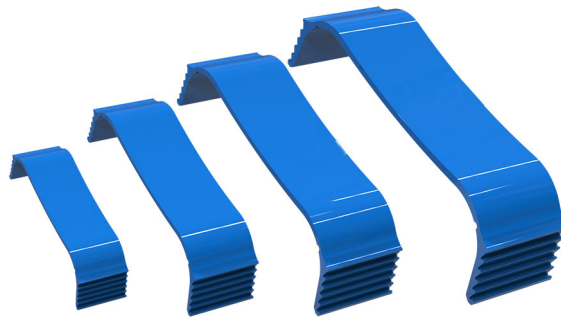


BLOCK

Pipe stop for Excellens duct

- cod. 11125016 - cod. 11125017 - cod. 11125018
- cod. SCD100122

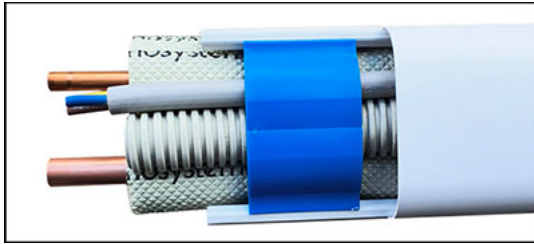


TECHNICAL SPECIFICATIONS:

- Made of PA6

CODE	MODEL
11125016	BLOCK T - 60
11125017	BLOCK T - 72
11125018	BLOCK T - 100
SCD100122	BLOCK T - 135

EXAMPLE OF INSTALLATION:



ITEMS

CODE	DESCRIPTION
11125016	"BLOCK" PIPE CLAMP FOR EXCELLENS AND OPTIMA TRUNKING T-60
11125017	"BLOCK" PIPE CLAMP FOR EXCELLENS AND OPTIMA TRUNKING T-72
11125018	"BLOCK" PIPE CLAMP FOR EXCELLENS AND OPTIMA TRUNKING T-100
SCD100122	"BLOCK" PIPE CLAMP FOR EXCELLENS AND OPTIMA TRUNKING T-135

All rights relating to this publication are the exclusive property of Tecnosystemi SpA.
 Tecnosystemi SpA reserves the right to make changes at any time and without notice, for technical or commercial needs.