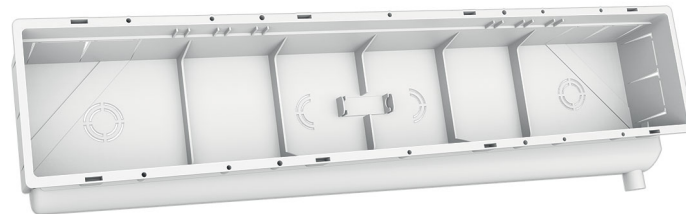


# FLAT CLASSIC

built-in installation box

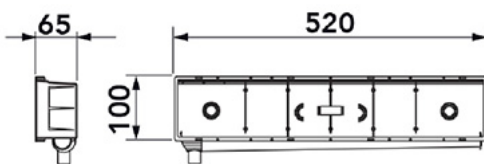
- cod. 11100094



## TECHNICAL SPECIFICATIONS:

- Right/left reversible tilted rear conveyor with  $\varnothing$  20 vertical coupling
- Protection grille
- Anti-plaster cardboard
- Interlocking cover or with screws

## DIMENSIONS



## PACK COMPLETE WITH

- 1 preparation box with built-in level
- 1 Interlocking lid

- Anti-plaster cardboard

## ITEMS

CODE	DESCRIPTION
11100094	FLAT CLASSIC READY-TO-PLUMB ENCLOSURE WITH SNAP-ON COVER

All rights relating to this publication are the exclusive property of Tecnosystemi SpA.  
Tecnosystemi SpA reserves the right to make changes at any time and without notice, for technical or commercial needs.

