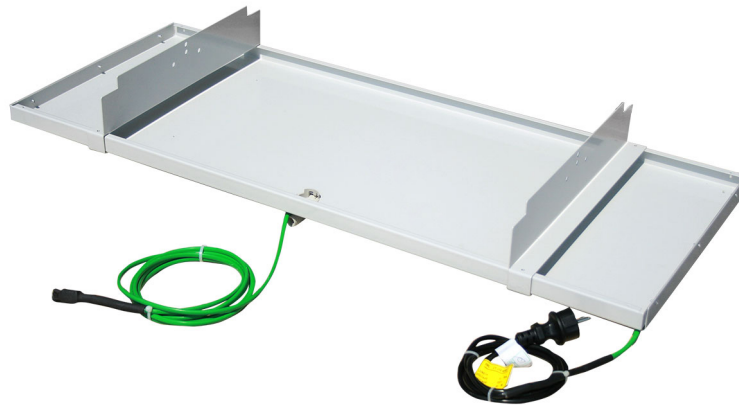


Condensate drain pan with heating Antifreeze cable for condensate drain pipes

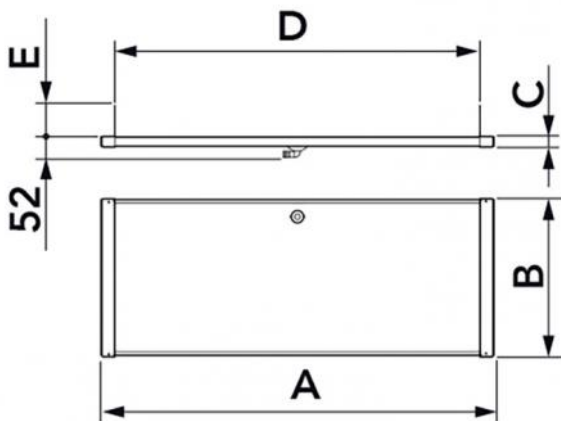
- cod. SCD300066 - cod. SCD300071 - cod. SCD300100



TECHNICAL SPECIFICATIONS:

- Electrogalvanised sheet
- External polyester painting RAL 9002
- Heating cable power 15 W/m
- Coupling for condensate drain pipe Ø 16 mm
- Power supply voltage 230 V
- Cable diameter 6 mm
- Resistance tolerance from -5% to +10%
- Built-in thermostat
- Connection at +3°C and disconnection at 12°C

EXAMPLE OF INSTALLATION:



DIMENSIONS

CODE	A [mm]	B [mm]	C [mm]	D [mm]	E [mm]
SCD300066	980	390	35	910 max.	80
SCD300071	1100	550	35	1030 max.	130
SCD300100	1400	550	35	1330 max.	130

ITEMS

CODE	DESCRIPTION
SCD300066	LARGE CONDENSATE TRAY WITH FROST-PROTECT. LONG CABLE WITH THERMOSTAT
SCD300071	MAXI CONDENSATE TRAY WITH FROST-PROTECT. LONG CABLE WITH THERMOSTAT
SCD300100	

All rights relating to this publication are the exclusive property of Tecnosystemi SpA.
Tecnosystemi SpA reserves the right to make changes at any time and without notice, for technical or commercial needs.

