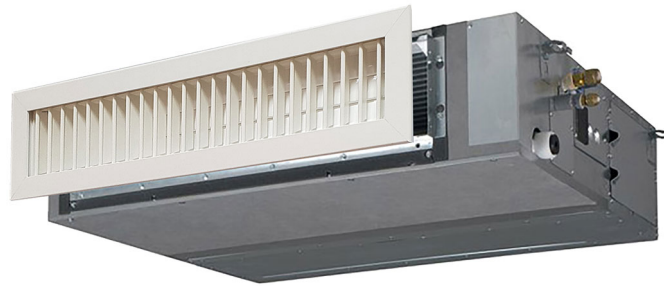


STAR POINT

white painted motorised delivery grille for low-prevalence ducted units

- cod. GAD200024 - cod. GAD200025 - cod. GAD200026



DESCRIPTION

The “Star” delivery grille is designed to meet the functional and aesthetic needs in the installations of low-prevalence indoor units.

The grille opens when the machine is switched on and closes when it is switched off, without having to make electrical connections between the machine and the grille itself.

Ideal for hotels, hotels, restaurants, etc.

TECHNICAL SPECIFICATIONS:

- White painted aluminium
- Automatic opening in presence of air flow, automatic closure in absence of air flow
- Power supply 220 V
- Built-in power supply included

DIMENSIONS

CODE	Grille external frame [mm]	WALL INSTALLATION HOLE [mm]
GAD200024	732x182	700x150
GAD200025	932x182	900x150
GAD200026	932x232	900x200

ITEMS

CODE	DESCRIPTION
GAD200024	"STAR POINT" 700X150 -WHITE PAINTED (RAL 9010) ELECTRIC SUPPLY GRILLE FOR LOW HYDRAULIC HEAD DUCTED UNITS
GAD200025	"STAR POINT" 900X150 -WHITE PAINTED (RAL 9010) ELECTRIC SUPPLY GRILLE FOR LOW HYDRAULIC HEAD DUCTED UNITS
GAD200026	"STAR POINT" 700X200 -WHITE PAINTED (RAL 9010) ELECTRIC SUPPLY GRILLE FOR LOW HYDRAULIC HEAD DUCTED UNITS

All rights relating to this publication are the exclusive property of Tecnosystemi SpA.
 Tecnosystemi SpA reserves the right to make changes at any time and without notice, for technical or commercial needs.