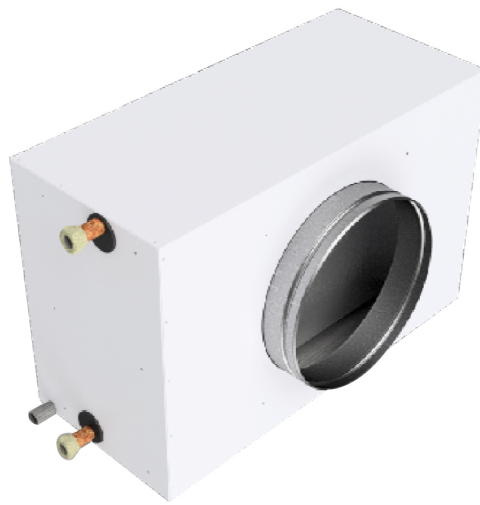


Heating battery hot/ cold

- cod. ACC400017 - cod. ACC400018 - cod. ACC400019
- cod. ACC400020 - cod. ACC400021 - cod. ACC400022
- cod. ACC400023 - cod. ACC400024 - cod. ACC400025
- cod. ACC400026



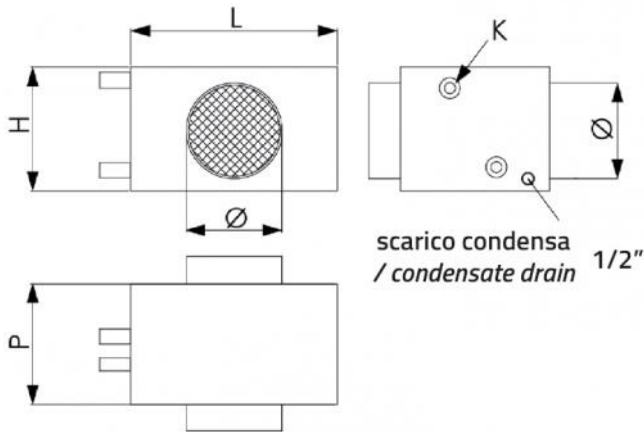
DESCRIPTION

Cold/hot water battery from channel for ventilation systems.

The battery has a self-supporting structure made of white pre-painted metal sheet, complete with inlet and outlet fixing sleeves and a tray for collecting condensate.

The inner surface is covered with thermal/acoustic insulation made of polyethylene foam (thk. 10 mm).

Supplied complete with fixing brackets.



DIMENSIONS

CODE	MOD.	L [mm]	H [mm]	P [mm]	Ø [mm]	K [inch]
ACC400017	150 m ³ /h and 1 Kw	310	200	300	125	1/2"
ACC400018	220 m ³ /h and 1,6 Kw	360	270	300	160	1/2"
ACC400019	350 m ³ /h and 2,2 Kw	360	270	300	160	1/2"
ACC400020	500 m ³ /h and 3,2 Kw	460	270	300	200	1/2"
ACC400021	800 m ³ /h and 5,7 Kw	650	330	300	250	1/2"
ACC400022	1200 m ³ /h and 7,8 Kw	785	430	350	315	3/4"
ACC400023	1600 m ³ /h and 9,7 Kw	780	520	350	315	3/4"
ACC400024	2200 m ³ /h and 15 Kw	780	520	400	355	3/4"
ACC400025	3200 m ³ /h and 22 Kw	895	660	450	400	1"
ACC400026	4000 m ³ /h and 29 Kw	1000	740	450	400	1"

BATTERY PERFORMANCE IN HEATING

CODE	Air flow rate		t° IN water	t° OUT water	Total power	t° IN air	t° OUT air	Water flow rate		Water pressure drop	Air pressure drop
	[m³/h]	[m/s]	[°C]			[W]	[°C]		[l/h]		
ACC400017	150	1.2	50	45	1	20	40.6	181	1	20.4	8
ACC400018	220	1	50	45	1.6	20	41.6	279	0.8	10.3	6
ACC400019	350	1.6	50	45	2.2	20	38.9	389	1.1	18.4	13
ACC400020	500	1.6	50	45	3.2	20	38.7	549	1	13.4	14
ACC400021	800	1.4	50	45	5.7	20	41	985	1	11.9	13
ACC400022	1200	1.45	50	45	10	20	44.7	1728	1.25	21.5	27
ACC400023	1600	1.61	50	45	12.9	20	43.9	2234	1.08	14.4	33
ACC400024	2200	2.22	50	45	18.7	20	45.2	3241	1.17	15.4	75
ACC400025	3200	2.21	50	45	27.4	20	45.4	4747	1.37	21.2	74
ACC400026	4000	2.14	50	45	34.5	20	45.6	5988	1.44	26.3	70

BATTERY PERFORMANCE IN COOLING

CODE	t° IN water	t° OUT water	Total power	Sensitivity Power.	t° IN air	rH% IN air	t° OUT air	rH% OUT air	Water flow rate		Water pressure drop	Air pressure drop	Condensate
	[°C]				[kW]	[°C]	[%rH]	[°C]	[%rH]	[l/h]			
ACC400017	7	12	1	0.6	27	60	15.2	87.3	183	1	25.5	12	0.7
ACC400018	7	12	1.6	0.9	27	60	14.9	89.2	272	0.8	12.2	9	1.1
ACC400019	7	12	2.2	1.2	27	60	16.4	85	380	1	21.8	19	1.5
ACC400020	7	12	3.1	1.7	27	60	16.7	84.9	523	1	15.1	20	2.1
ACC400021	7	12	5.7	3.1	27	60	15.1	88.1	981	1	14.5	20	4
ACC400022	7	12	7.8	4.9	27	60	15.1	99.8	1334	0.96	15.9	54	4
ACC400023	7	12	9.7	6.2	27	60	15.6	99.4	1664	0.8	10	63	4.8
ACC400024	7	12	15.1	9.2	27	60	14.6	100	2601	0.94	15.5	113	8.2
ACC400025	7	12	22.5	13.7	27	60	14.5	100	3863	1.12	20	113	12.3
ACC400026	7	12	28.7	17.2	27	60	14.3	100	4929	1.19	21.8	108	15.9

ITEMS

CODE	DESCRIPTION
ACC400017	COLD / HOT WATER COIL - 150m ³ /h e 1Kw
ACC400018	COLD / HOT WATER COIL - 220m ³ /h e 1,6Kw
ACC400019	COLD / HOT WATER COIL - 350m ³ /h e 2,2Kw
ACC400020	COLD / HOT WATER COIL - 500m ³ /h e 3,2Kw
ACC400021	COLD / HOT WATER COIL - 800m ³ /h e 5,7Kw
ACC400022	COLD / HOT WATER COIL - 1200m ³ /h e 7,8Kw
ACC400023	COLD / HOT WATER COIL - 1600m ³ /h e 9,7Kw
ACC400024	COLD / HOT WATER COIL - 2200m ³ /h e 15Kw
ACC400025	COLD / HOT WATER COIL - 3200m ³ /h e 22Kw
ACC400026	COLD / HOT WATER COIL - 4000m ³ /h e 29Kw

All rights relating to this publication are the exclusive property of Tecnosystemi SpA.
 Tecnosystemi SpA reserves the right to make changes at any time and without notice, for technical or commercial needs.