

ARIA 2 ELEGANCE H2O

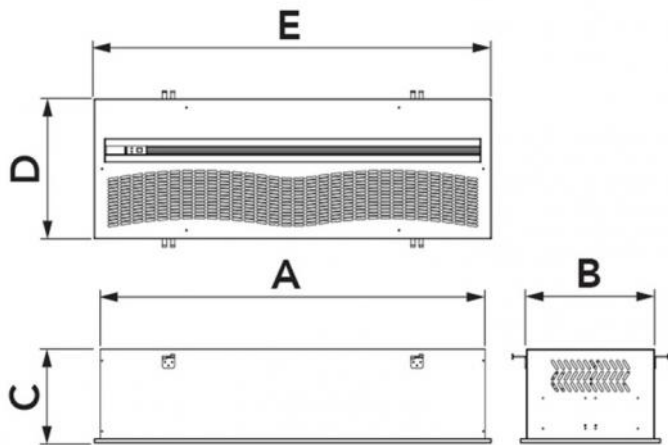
Built-in centrifugal air curtain with hot water battery

- cod. 12450092 - cod. 12450102 - cod. 12450112



TECHNICAL SPECIFICATIONS:

- 3 models in white
- 3 speeds operated by remote control
- Air curtains are designed for indoor use
- Total integration in the false ceiling
- The unit must be installed horizontally
- Installation height max. 3 m



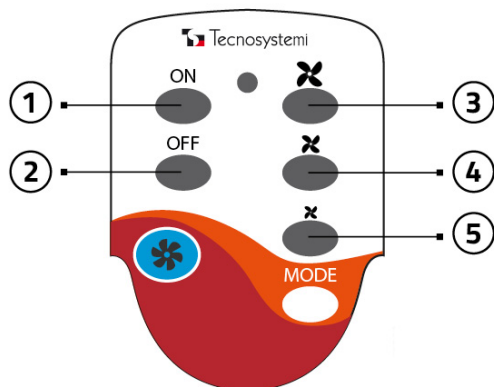
DIMENSIONS

CODE	MODEL	A [mm]	B [mm]	C [mm]	D [mm]	E [mm]	SUITABLE FOR LARGE DOORS [mm]
12450092	1000	1000	362	331	396	1034	L1000 H3000
12450102	1500	1500	362	331	396	1524	L1500 H3000
12450112	2000	2000	362	331	396	2034	L2000 H3000

TECHNICAL DATA

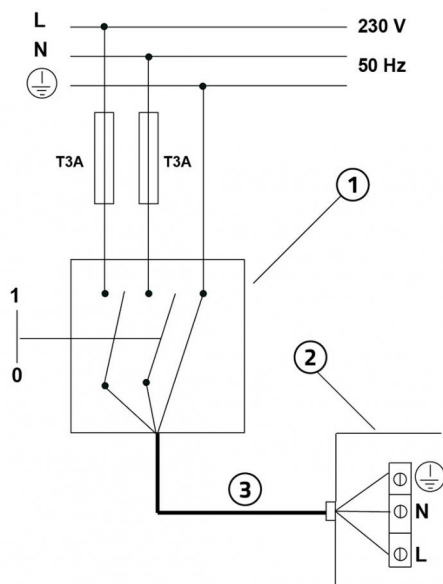
CODE	SUPPLY VOLTAGE [V]	FREQUENCY [Hz]	POWER CONSUMPTION [W]	AIR SPEED AT INLET [m/s]	AIR FLOW RATE [m³/h]	SOUND POWER LEVEL [DB(A)]	MEASUREMENT OF IN/OUT CONNECTIONS [in]	AVERAGE TEMPERATURE IN/OUT [°C]	HEAT OUTPUT [kW]	AVERAGE WATER FLOW [m³/h]	WEIGHT [kg]
12450092	230	50	180	I:8 II:10 III:12	1590	62	1/2"	70/60	11,4	1	31,9
12450102	230	50	240	I:8 II:10 III:12	2120	64	1/2"	70/60	16,1	1,42	45,1
12450112	230	50	360	I:8 II:10 III:12	3190	66	1/2"	70/60	24,1	2,12	64

REMOTE CONTROL



- [1] ON / Turns the appliance on
- [2] OFF / Shuts the appliance off
- [3] Maximum speed
- [4] Medium speed
- [5] Low speed

SINGLE-PHASE POWER SUPPLY AND WIRING DIAGRAM

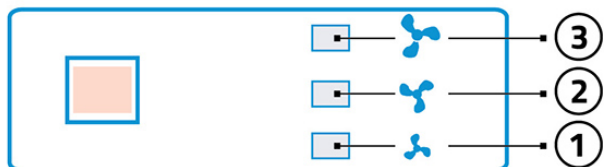


- [1] Omnipolar thermal magnetic protection switch compliant with EN 61508:1
- [2] Power cable 3x2.5 mm²
- [3] Electrical connection box

IMPORTANT!

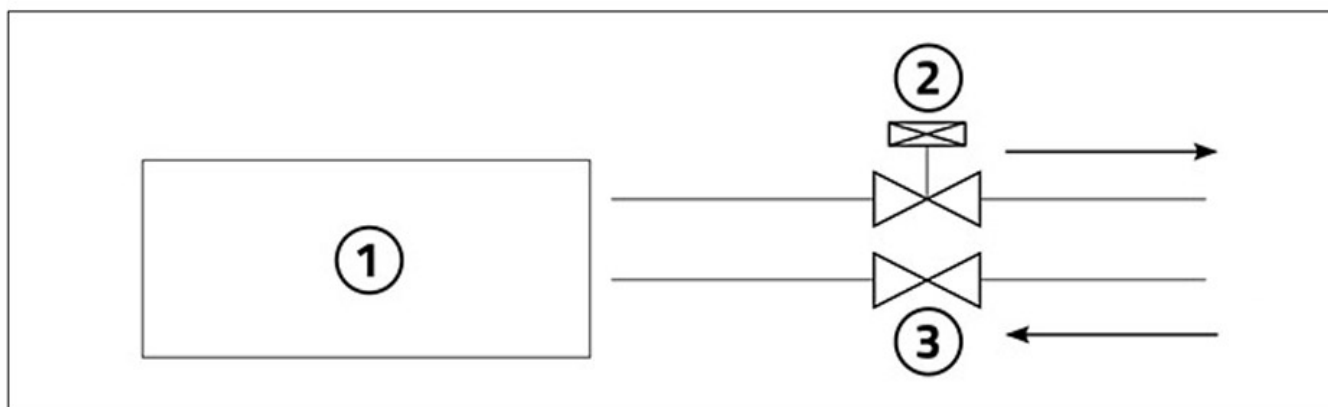
During the electrical connection, the installer must comply with the polarities indicated by the plate in front of the power supply terminal board.

DASHBOARD LABEL



- [1] 1st speed (Min) 1 LED LIT
- [2] 2nd speed (Med) 2 LEDS LIT
- [3] 3rd speed (Max) 3 LEDS LIT

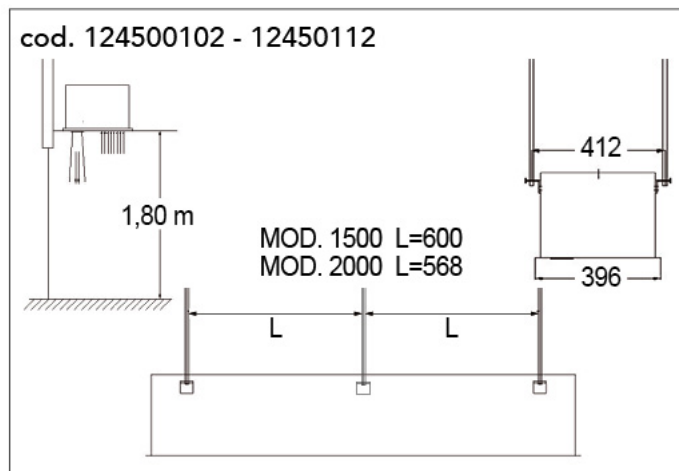
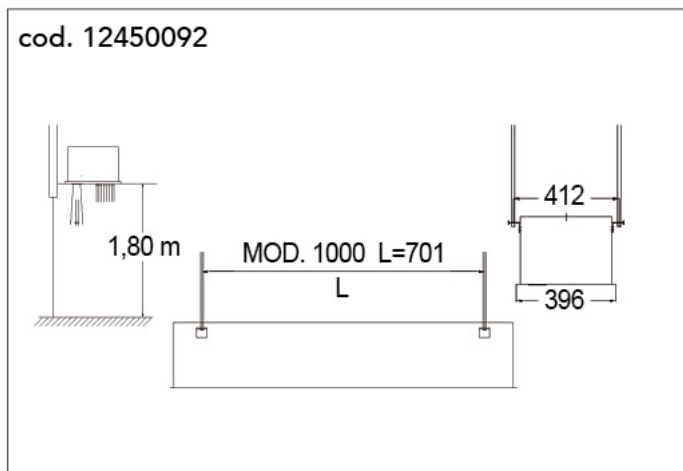
INSTALLATION PRINCIPLES



Connect the air curtain to the water system via the appropriate couplers.
 The water pressure inside the pipe shall not exceed 0.8 MPa.
 For safety reasons, the pipe is resistant to corrosion and heat.

Refer to the illustration for installation.
 [1] AIR BARRIER WITH HOT WATER
 [2] ELECTROMAGNETIC VALVE (not supplied)
 [3] CLOSURE VALVE (not supplied)

INSTALLATION AND START-UP



GENERAL WARNINGS

- Before connecting the copper piping, check that it is not clogged.
- The operation of the air curtain in heating mode, during winter, can be continuous or controlled by a timer (not supplied)
- If the air curtain is not working properly, turn off the unit and have it checked by a specialised technician.
- Do not use the air curtain in heating mode when the fan is off.
- Regularly clean the air curtain and all its accessories.
- Maintain a minimum distance of 200 mm between the air curtain and the ceiling.
- Install indoors only.
- Install horizontally only at least 2 m above the ground.
- Do not place the device immediately below a power socket.

CONDITIONS OF USE

DO NOT INSTALL the air curtain in the following conditions

- Make sure that it cannot come into contact with rain or suck up water because this could result in short circuits
- In the presence of flammable vapours.
- Temperature above +40°C or below -10°C; relative humidity $\geq 90\%$
- In the presence of explosive mixtures or in the presence of gas.
- Relative humidity higher than 90%

ITEMS

CODE	DESCRIPTION
12450092	"ARIA2 ELEGANCE H2O" 1500 CENTRIFUGAL AIR CURTAINS WITH HOT WATER COIL
12450102	"ARIA2 ELEGANCE H2O" 1000 CENTRIFUGAL AIR CURTAINS WITH HOT WATER COIL
12450112	"ARIA2 ELEGANCE H2O" 2000 CENTRIFUGAL AIR CURTAINS WITH HOT WATER COIL

All rights relating to this publication are the exclusive property of Tecnosystemi SpA.
Tecnosystemi SpA reserves the right to make changes at any time and without notice, for technical or commercial needs.