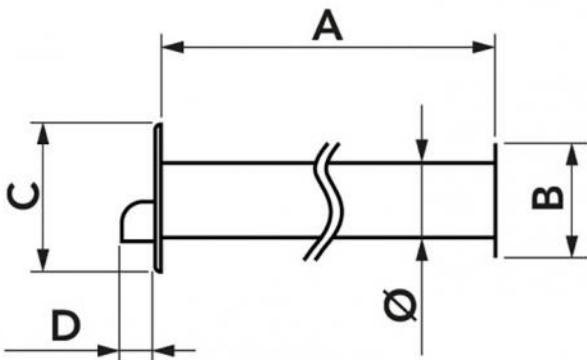


## KARFE - exc

universal tear-proof kit plus finishing surround

- cod. SCD100126 - cod. SCD100264



## DIMENSIONS

CODE	A [mm]	B [mm]	C [mm]	D [mm]	Ø [mm]
SCD100126	500	100	130	27,5	62
SCD100264	1000	100	130	27,5	62

## DESCRIPTION

The anti-tear kit is made in stiff recycled anti-UVA PVC.

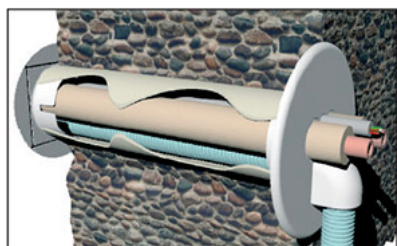
The kit makes it easier to pass the cooling pipes through the wall, preventing the insulating material from breaking or tearing on the sharp brick when being pulled during installation.

The kit includes the RFE finishing rosette for a better external finish.

## KIT CONTENTS

- 1 KA tear-resistant kit
- 1 rosette RFE external finish
- Heat shrink barcode packaging

## EXAMPLE OF INSTALLATION:



## ITEMS

CODE	DESCRIPTION
SCD100126	"KARFE" UNIVERSAL WALL SLEEVE KIT - WHITE L 500mm - KARFE 500
SCD100264	"KARFE" UNIVERSAL WALL SLEEVE KIT - WHITE L 1.000mm - KARFE 1000

All rights relating to this publication are the exclusive property of Tecnosystemi SpA.  
 Tecnosystemi SpA reserves the right to make changes at any time and without notice, for technical or commercial needs.