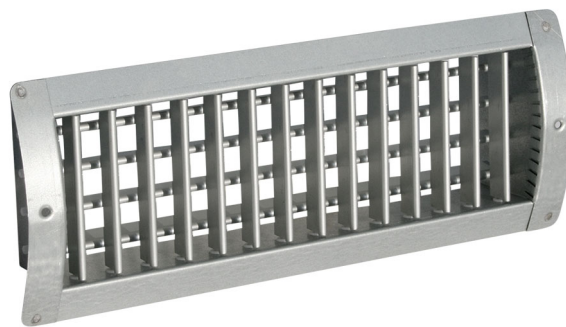


# Grille with adjustable flaps for circular ducts

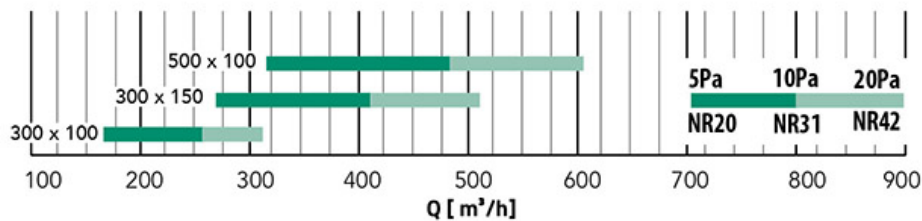
- cod. 11175130 - cod. 11175135 - cod. 11175140



## TECHNICAL SPECIFICATIONS:

- Made of galvanized steel
- Fastening by means of front screws
- Double row of flaps
- Natural finish

## RAPID AIR FLOW SELECTION



## DIMENSIONS

CODE	Ø INSTALLATION DUCT [m]	EXTERNAL FRAME DIMENSIONS [m]	BACK NECK DIMENSIONS [m]	INSTALLATION HOLE SIZE [m]	REAR COLLAR DEPTH [m]	T LANCE (m) Vt=0.25 m/s
11175130	200	330 x 125	290 x 90	300 x 100	63	8,55
11175135	200	530 x 125	490 x 90	500 x 100	63	12,33
11175140	300	330 x 175	290 x 140	300 x 150	70	10,71

## ITEMS

CODE	DESCRIPTION
11175130	GRILLE WITH ADJUSTABLE BLADES FOR ROUND DUCTS 300 x 100
11175135	GRILLE WITH ADJUSTABLE BLADES FOR ROUND DUCTS 500 x 100
11175140	GRILLE WITH ADJUSTABLE BLADES FOR ROUND DUCTS 300 x 150

All rights relating to this publication are the exclusive property of Tecnosystemi SpA.  
Tecnosystemi SpA reserves the right to make changes at any time and without notice, for technical or commercial needs.