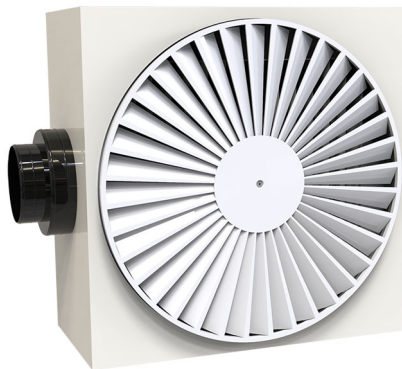


DCEP

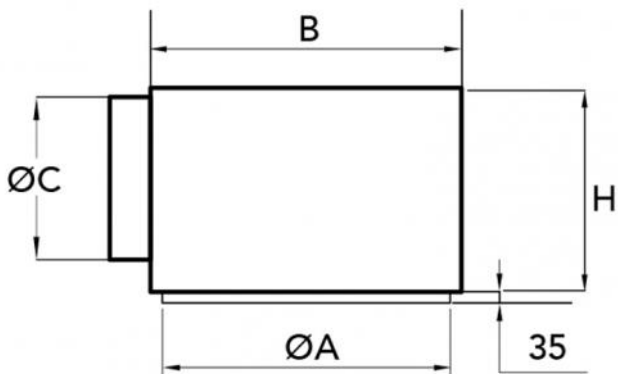
circular helix diffuser 36 slots in white painted metal complete with damper and lowered plenum

- cod. PWD200025



TECHNICAL SPECIFICATIONS:

- Made of white painted metal RAL 9016
- Suitable for air delivery and intake
- Outer closed cell polyethylene coating (thickness 3 mm)
- Manually operated calibration damper fitted in the collar
- High operating efficiency
- Lowered plenum with damper
- Hole for ceiling mounting of plenum
- Installation height from 2.6 to 4 m



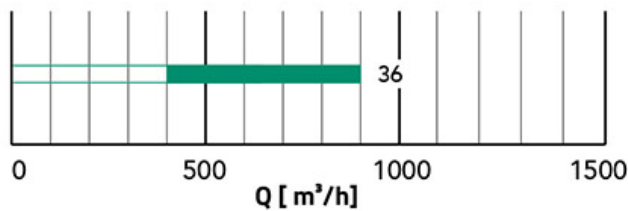
DIMENSIONS

CODE	Ø A [mm]	B [mm]	Ø C [mm]	H [mm]	SLOTS
PWD200025	600	630 x 630	200	280	36

TECHNICAL DATA

Ak [m²]	Q [m³/h] MIN	Q [m³/h] MAX	LwA [dB(A)] MIN	LwA [dB(A)] MAX	X(0.25) - Y(0.25) MIN [m]	X(0.25) - Y(0.25) MAX [m]	Dpt [Pa] MIN	Dpt [Pa] MAX
0,0368	400	900	23	46	3,3	7,4	10	50

RAPID AIR FLOW SELECTION



ITEMS

CODE	DESCRIPTION
PWD200025	CIRCULAR HELICAL DIFFUSER DCEP WITH 36 SLOTS WHITE PAINTED METAL WITH DAMPER AND LOWERED PLENUM

All rights relating to this publication are the exclusive property of Tecnosystemi SpA.
Tecnosystemi SpA reserves the right to make changes at any time and without notice, for technical or commercial needs.